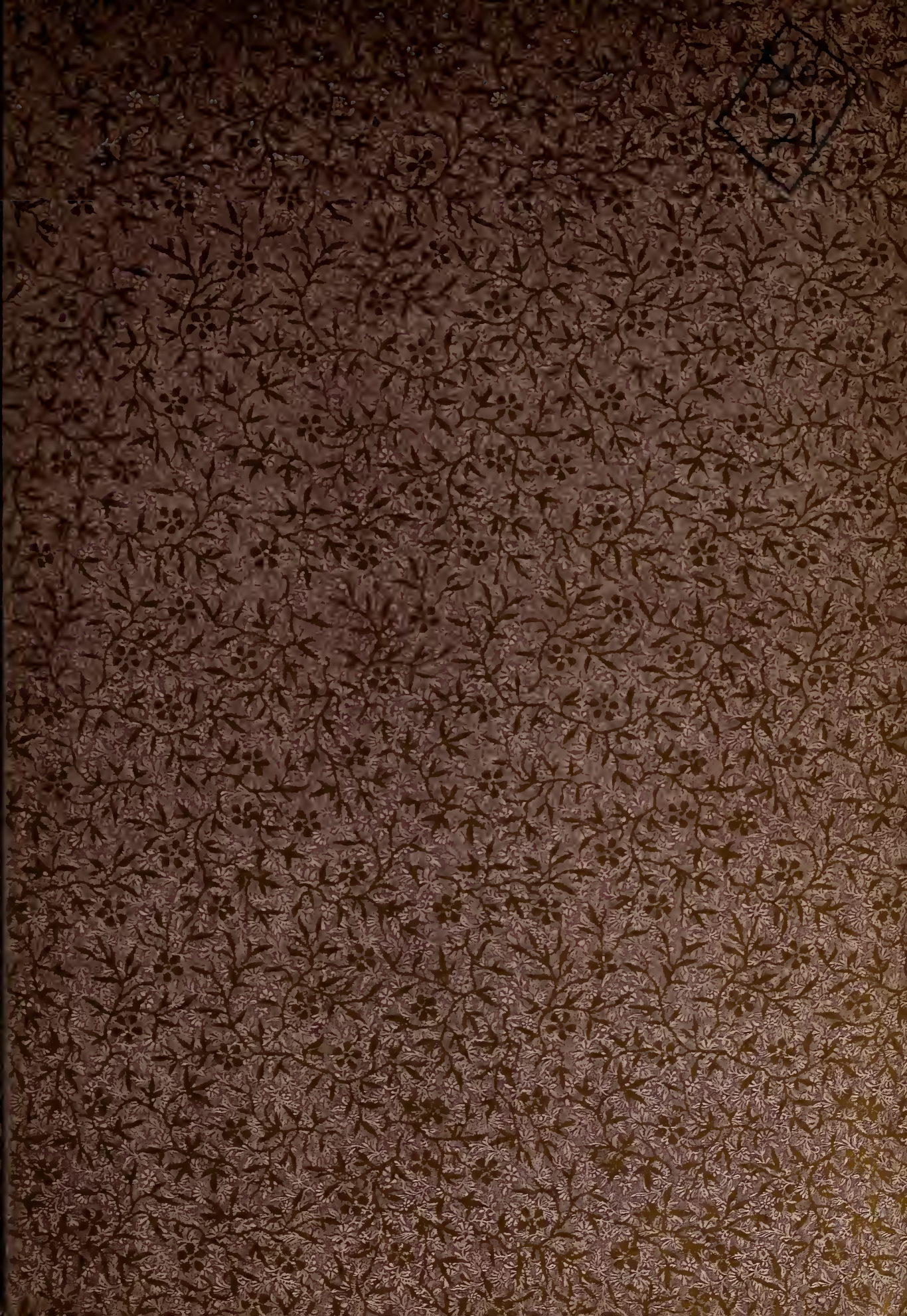


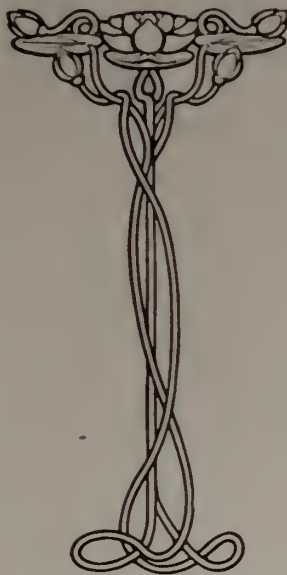
**BOSTON
PUBLIC
LIBRARY**





D. 979.7 P. 44
No. 10, 2000
3h No.

Notable Men of Washington



THE PERKINS PRESS
TACOMA, WASH.
PUBLISHERS
1912

Engravings by
THE TACOMA ENGRAVING COMPANY
Tacoma, Wash.

F890
.N89
1912x



INTRODUCTION

“NOTABLE MEN OF WASHINGTON” is issued as a book of utility in the newspaper office.

¶ Publishers at the present time attach an increasing importance to illustrations. In fact, in many of the modern newspapers, illustrations are considered as equal in importance to news.

¶ Newspapers exhaust every resource to secure photographs of persons for reproduction with current news and they are often compelled to make illustrations from old style cuts and obsolete drawings.

¶ Owing to the wonderful advancement of the State of Washington in all lines of business and to the rapid strides toward national fame of its foremost citizens, it seems almost a necessity to publish a book which shall contain portraits and brief biographical sketches of the most prominent men in this State.

¶ Determined effort has been made to secure the most recent photographs and reproduction has been made carefully in order that a second halftone may be taken from the portrait published herein. Extreme care has been exercised to publish only essential biographical data and this has been secured from the subjects themselves. This book has been designed to be an immediate aid to the newspaper artist and biographer.

MEMBERS OF
THE PERKINS PRESS

THE TACOMA DAILY LEDGER
THE TACOMA SUNDAY LEDGER
THE TACOMA WEEKLY LEDGER
THE TACOMA DAILY NEWS
THE TACOMA ENGRAVING COMPANY
THE BELLINGHAM DAILY HERALD
THE BELLINGHAM WEEKLY WORLD-HERALD
THE BELLINGHAM DAILY AMERICAN-REVEILLE
THE BELLINGHAM SUNDAY AMERICAN-REVEILLE
THE BELLINGHAM WEEKLY AMERICAN-REVEILLE
THE EVERETT DAILY HERALD
THE EVERETT WEEKLY HERALD
THE OLYMPIA DAILY RECORDER
THE OLYMPIA WEEKLY RECORDER
THE OLYMPIA DAILY OLYMPIAN
THE OLYMPIA SUNDAY OLYMPIAN

HOME OF THE PERKINS PRESS



THE PERKINS BUILDING, TACOMA, WASH.

ALLEN & LAMBORN PRINTING CO.



TACOMA, WASHINGTON



PERKINS, SIDNEY ALBERT—Born in Boston, Mass. Came to State of Washington in 1886. Assistant Secretary Republican National Committee, 1896; Secretary to Hon. M. A. Hanna, 1896 to 1901. President Washington State Good Roads Association; member Republican National Committee from Washington. Owning and operating the Tacoma Daily Ledger, Tacoma Evening News, Tacoma Engraving Company, Everett Daily Herald, Everett, Wash., Bellingham Daily Herald, Morning American and Reveille, Bellingham, Wash., Olympia Daily Recorder and Morning Olympian, Olympia, Wash. Vice president and director Pacific Coast Gypsum Company; director National Bank of Commerce, director Alaska Pacific Steamship Company. Residence, 501 North D Street; business address, Perkins Building, Tacoma, Wash.



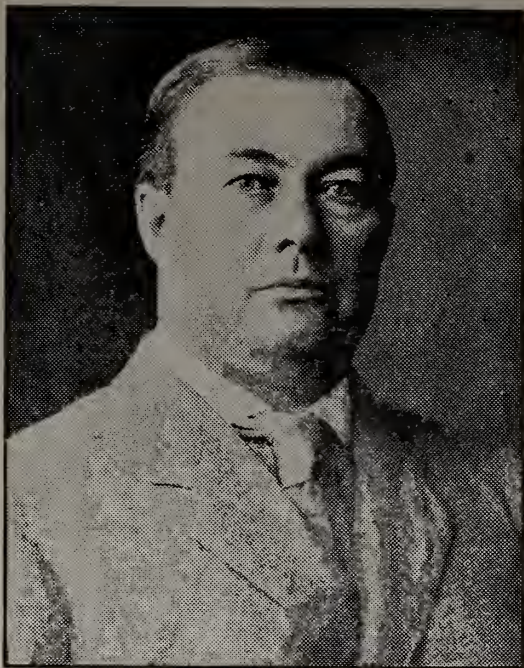
HAY, GOVERNOR MARION E.—Born in Adams County, Wisconsin, December 9, 1865. Educated in public schools of that county. From there he moved to Northwestern Iowa, where he lived one year on a farm. In 1882 moved to Jackson, Minn., where he was employed in a store until 1883. Married at that place and removed to Davenport, Lincoln County, Wash., in 1885. Engaged general merchandise business in Wilbur in 1886. In July, 1903, removed to Spokane, his present home. Nominated in September, 1905, as Republican candidate for Lieutenant Governor and elected in November. Upon death of Governor Samuel G. Cosgrove succeeded to office of Governor March 29, 1909.



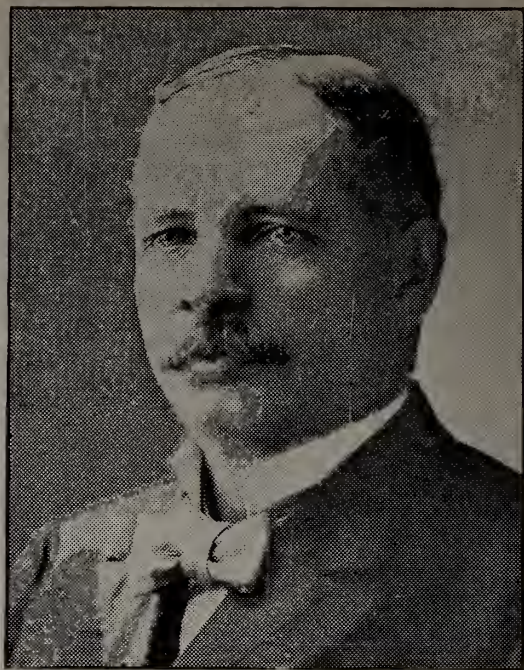
HOWELL, ITHAMAR M.—Born in Waukon, Alameda County, Iowa, February 3, 1866; moved to Tacoma, Wash., in 1877, which has been his home ever since. Educated in public schools of Pierce County and Oregon State Normal School at Monmouth, Ore. Engaged in the real estate business as a member of the firm of J. S. Howell & Son. In 1898 and 1899 connected with Northern Pacific Land Department under Thomas Cooper, and in 1900 was made Deputy County Auditor of Pierce County, which position he held for four years, succeeding to the position of County Auditor in 1904, to which office he was twice elected by a large majority. Appointed Secretary of State on February 15, 1909, which position he now holds. Mr. Howell's extensive experience as a public officer makes him a valuable asset to the State.



SEYMOUR, WILLIAM WOLCOTT—Born in St. Albans, Franklin County, Vt. Educated at Williams College, also attended University of Berlin and Grottingen, Germany. Came West to Tacoma in 1889 and went into business of investment banker; office at 401 Provident building. Belongs to Country Club, Commercial Club, Union Club, University Club, Tennis Club, all in Tacoma; Alpha Delta Phi and Campfire Club in New York City. "I regret to be obliged to admit that the better half of this family is Mrs. Seymour, and in this everyone agrees who knows us both." Elected mayor of City of Tacoma in April, 1911, on recall ticket.



PAULHAMUS, W. H.—Born at Altoona, Blair County, Pa., March 4, 1865. Educated in city schools. Came to Sumner, Wash., in 1890 and followed farming. Member of Grange. State senator from Pierce county.



WARBURTON, HON STANTON—Born Sullivan County, Pennsylvania, April 13, 1865. Arrived Washington August, 1888. Lawyer. State Senator Washington 1897 to 1905. Congressman from the Third District. Member Country, Commercial and Union Clubs.



METCALF, RALPH—Born at Providence, R. I., 1861. Educated in common school, Brown University and University of Michigan. Came to Tacoma in winter of 1889. Half owner in Tacoma Morning Globe, November, 1889. Entered shingle manufacturing business in 1894. Present occupation same; business address, Post-office Box 1535. Member Commercial, Union, Country, University, Knights Templar, and Shriner of Masonic order.



ALLEN, PLINY LEE—Born in Allen's Grove, Wis., in 1873. Educated in the Grammar and High Schools of Lawrence, Kas., and came to Seattle with his parents in 1889. Engaged in printing and publishing business in 1896 and has made distinct success in his chosen occupation. Took an early interest in politics and was elected to State Senate in 1906 and re-elected in 1910. Served as Chairman of Legislative Investigating Committee appointed at 1909 session and made a report of all state offices and institutions. Member of Seattle Athletic Club, Commercial Club, Chamber of Commerce and life member of Arctic Club. Prominent in fraternal life, being member of K. of P., Odd Fellows, Royal Arcanum and A. O. U. W. Married in 1895 to Sare W. Oltman, who, after an illness of a year, died October 18, 1911. Has two sons aged eleven and fifteen.



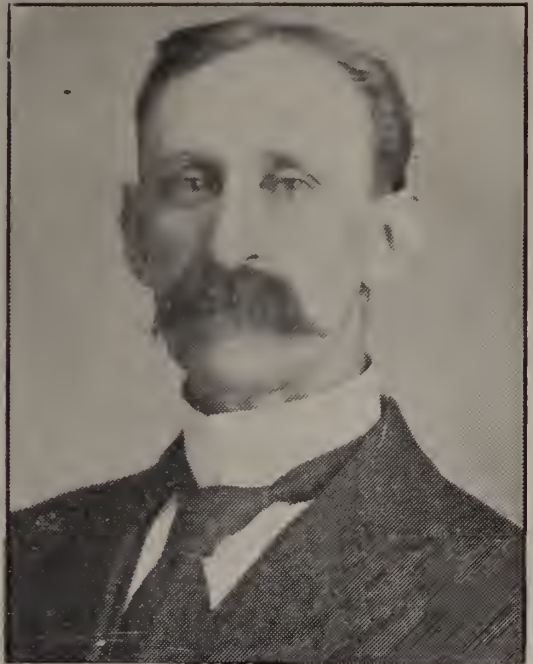
STOCKING, FRANK LEWIS—Born August 11, 1855, at Torrington, Litchfield County, Conn., son of Samuel J. and Mary L. Stocking. Common school; graduate of Eastman's Business College, March, 1875. Clerk in Jacksonville, Fla., postoffice from December, 1875, to April, 1878. Assistant Postmaster, Tacoma, Wash., June 1, 1891; Assistant Director General of Posts for Philippines, July, 1899; Postmaster Manila, P. I., July, 1900, to January, 1902; Assistant Postmaster Tacoma, Wash., April, 1905. Postmaster February 23, 1911. Member Commercial Club and Chamber of Commerce.



McMURRAY, JOHN L.—Born Wool County, Ohio in 1862. Son of James W. and Jane McMurray. Early education common schools of Ohio. Studied law in New York from 1886 to 1889. Attended Ohio State University at Columbus, Ohio. Graduated Phillips Exeter Academy at Exeter, New Hampshire. Prosecuting Attorney Pierce County, Washington, Court House, Tacoma, Wash. Member Tacoma Lodge No. 22, F. & A. M., 32d degree Scottish Rite, Adf. Temple, Elks, Improved Order Red Men, Knights of Pythias, Tacoma Chamber of Commerce and Commercial Club.



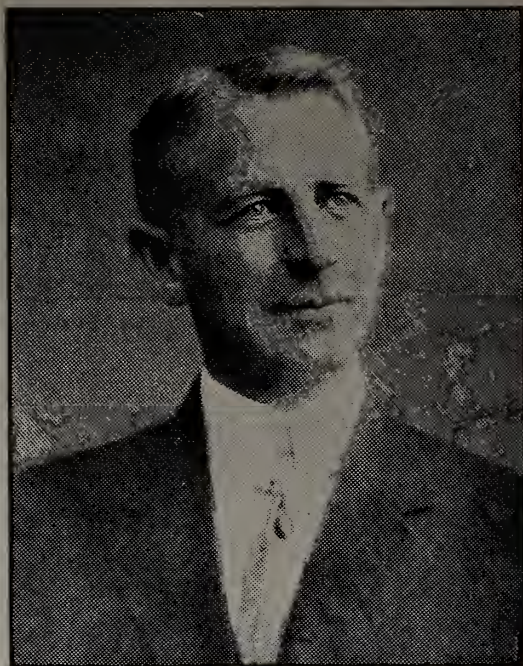
WEEKS, BENJAMIN J.—Born at Exeter, New Hampshire, October 29, 1856. Common school education. Came West to Tacoma in 1900. Manager of Street Railway Company of Tacoma for two years; manager Graves Railway System of Spokane three years. Manager Pacific Traction Company of Tacoma for two years. Real estate and insurance business until elected City Commissioner of Light and Water in 1911. Present address, City Hall, Tacoma, Wash. Member of Commercial Club and Elks' Club.



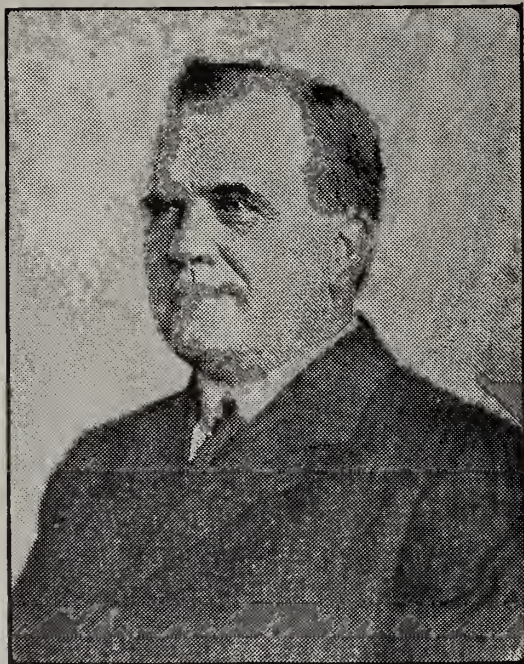
LONGMIRE, ROBERT—Born in Thurston County on 1,800-acre farm, known as the Longmire Donation Claim. James Longmire, his father, was a pioneer of this country and founder of the now famous Longmire Springs. Raised on the farm. Served as a guard at the U. S. penitentiary, being promoted from guard to jailer, then from jailer to deputy warden. Was one of the first to arrive in the noted Klondike country, where he suffered many hardships. After returning from Klondike, was appointed bailiff in the U. S. Court, where he worked up to the time of being elected Sheriff of Pierce County.



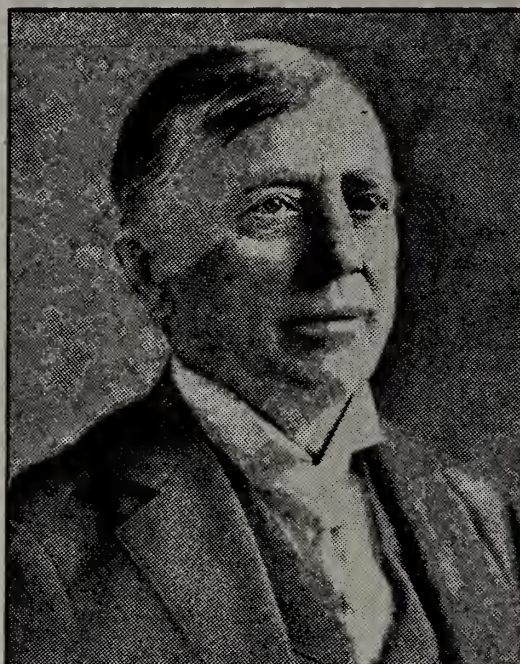
CARMAN, JOSEPH LINCOLN—Born at Carman, Ill., November 5, 1861. Came to Tacoma in January, 1890. Organized Pacific Lounge & Mattress Company in 1890; changed to Carman Manufacturing Company in 1900. Present business address, East H and Twenty-fifth streets, Tacoma, Wash. Member Union Club, Commercial Club, Country and Golf Club, Elks and Shriners.



MCDONALD, RICHARD D.—Born on farm, Province of Ontario, Canada. Common school education. Moved with family to Independence, Ia., at the age of 16. Came to Tacoma in 1889, and went into business of shoe merchant at 1301 Pacific avenue. Senior member of McDonald Shoe Company, established twenty-two years. Vice-president Shull-Day Company, manufacturers and jobbers men's overalls and gents' furnishings. Former president Chamber of Commerce, and the first president Tacoma Carnival of Nations. Member Tacoma Commercial Club.



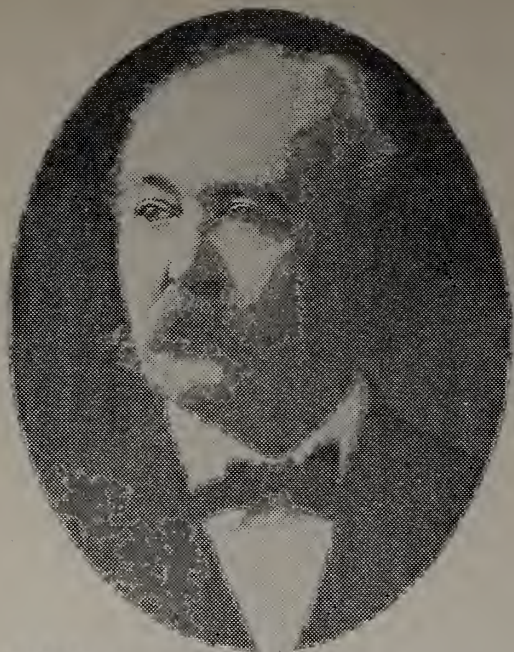
OLSON, O. B.—Born in Ocoila, Wis. Educated in common schools and High School of Willmar, Minn. Came West to Tacoma in 1883. Served as apprentice and journeyman plumber until 1891. Started in plumbing and heating business in 1891. Business address, 1130 Commerce street. Served in City Council as Councilman from 1902 to 1904, acting as chairman of light and water committee for one year. Member of Commercial Club, Rotary Club and Elks' Club.



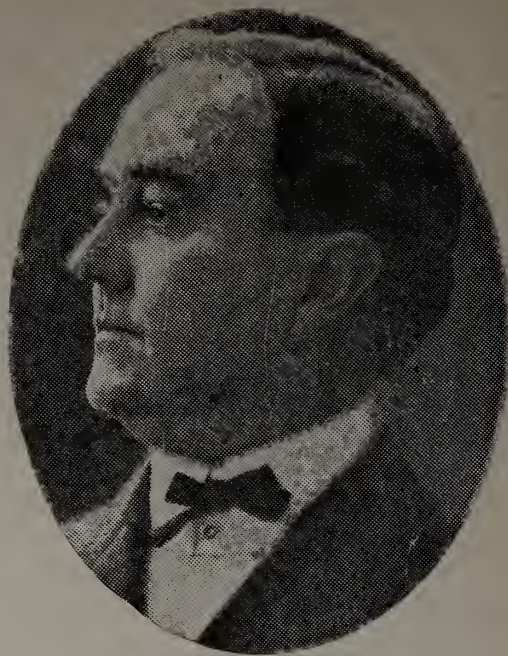
HEWITT, HENRY, JR.—Born Lancashire, England, 1840. Arrived in Washington in 1889. Treasurer St. Paul & Tacoma Lumber Company, president Wilkeson Coal & Coke Company, ex-president First National and Everett National Banks, Everett, Wash. Member of Commercial, Union and Country Clubs.



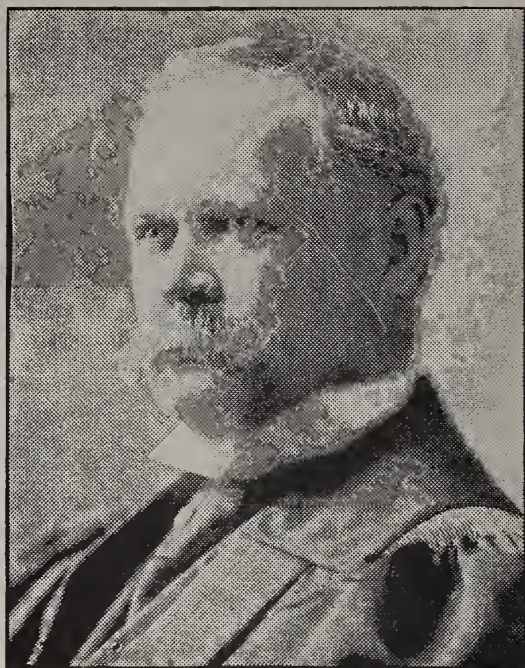
DEGE, JAMES HENRY—Born in Philadelphia, Pa., July 27, 1868; son of John Henry and Laura Alice Dege. Brought up and educated in public and night schools, Atlanta, Ga., his parents having moved there during his infancy. Entered business career as cash boy in a department store in Atlanta. At the age of 16 was promoted to department manager, same store. At the age of 20 left Southern home for Tacoma, arriving here September 30, 1888. Beginning at the bottom, today is president of Dege & Milner, clothiers, Tacoma, Wash., the largest institution of its kind in the Pacific Northwest. He is one of the best known men in the State. August 10, 1898, was commissioned Captain of Company "E," First Regiment National Guard of Washington, by Governor John R. Rogers. Member Commercial Club and Chamber of Commerce, Rotary Club, Country and Golf Club, Ivanhoe Commandery, Knights Templar; Afifi Temple, Mystic Shrine, Tacoma Consistory No. 3; 32nd Degree Mason, Lebanon Lodge F. & A. M.; Tacoma Lodge No. 174, B. P. O. E.



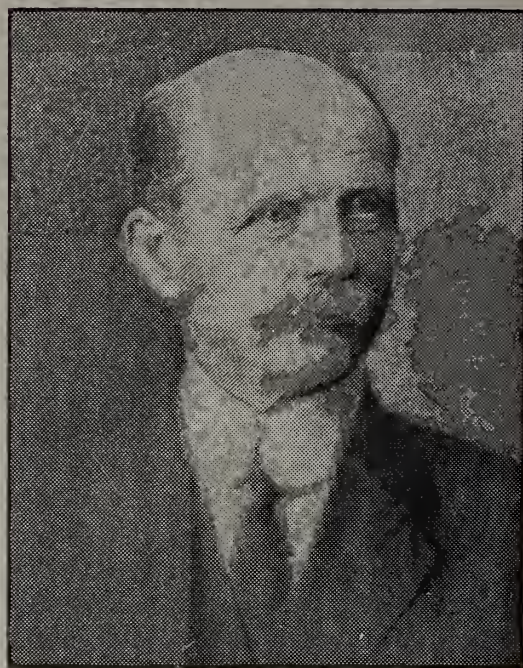
EASTERDAY, CHARLES MILTON—Born Nakomis, Ill., December 17, 1854; son of Martin V. and Margaret J. Easterday. Educated at Carthage College, State Universities of Nebraska and Iowa. Began practice of law in Nebraska in 1879. Located in Tacoma, Wash., in March, 1884. State Senator from 1891 to 1897; Regent State University 1897-1901. Judge Superior Court since 1908.



BLATTNER, FRANK S.—Born December 4, 1866, in Waterloo, Ind. Came to Tacoma in September, 1890.



CHAPMAN, W. O.—Born at Mount Union, Ohio, in 1859; son of Prof. I. O. Chapman of Mount Union College. Attended Mount Union College, taking degree of A. B. in 1876. Studied law four years following with Judge K. J. Caldwell in Cleveland, Ohio. Admitted to the bar in 1880. Came to Territory of Washington in 1881, residing at Port Townsend. Deputy Collector of Customs several years, and later, leaving that office, practiced law at Port Townsend a short time. Came to Tacoma in 1885 and engaged in practice of law. An attorney for Northern Pacific Railway Company from 1885 to 1896. Engaged in general practice of law until 1900, when nominated and elected as one of the judges of the Superior Court. Was re-elected to this position in 1904 and again in 1908. Is serving third term.



CLIFFORD, MILES L.—Born Rush County, Indiana, in the country. Educated Butler University, Indianapolis, Ind. In the spring of 1887 came to Tacoma. Judge of Superior Court, Pierce County, Washington, Room 2, Superior Court. Father, John; mother, Nancy Clifford. U. S. Commissioner from time of admission of State to time went on Superior Bench. Member School Board for about eleven years. On Superior Bench about five years.



FURTH, JACOB—Born in Schwihan, Austria. Public school education. Came to Nevada City, Cal. in 1858. Entered business as banker in Seattle, Wash. Member of Rainier Club, Seattle and Golf and Country Club.



CARLYON, DR. PHILLIP HENRY—Born in Union Grove, Wis., January 6, 1863. Educated in public schools and Philadelphia Dental College, graduating in 1884. Came to Olympia. Mayor of Olympia in 1904, 1905 and 1906. Member of City Park Commission. President of Olympia Chamber of Commerce for two years. Elected to Legislature of 1907, 1909 and 1911. Originated and carried through the immense "Carlyon fill" of the tidelands in Olympia.



BOARDMAN, EDWARD L.—Born at Hillsboro, Ohio, in 1857. Settled in Montana in 1889. Editor and proprietor of the Evening Herald at Helena for three years. In January, 1893, acquired and disposed of successfully the Yakima Republic, the Yakima Herald, the Bulletin and the Puyallup Republican. Appointed State Public Printer for a term of four years in January, 1909.

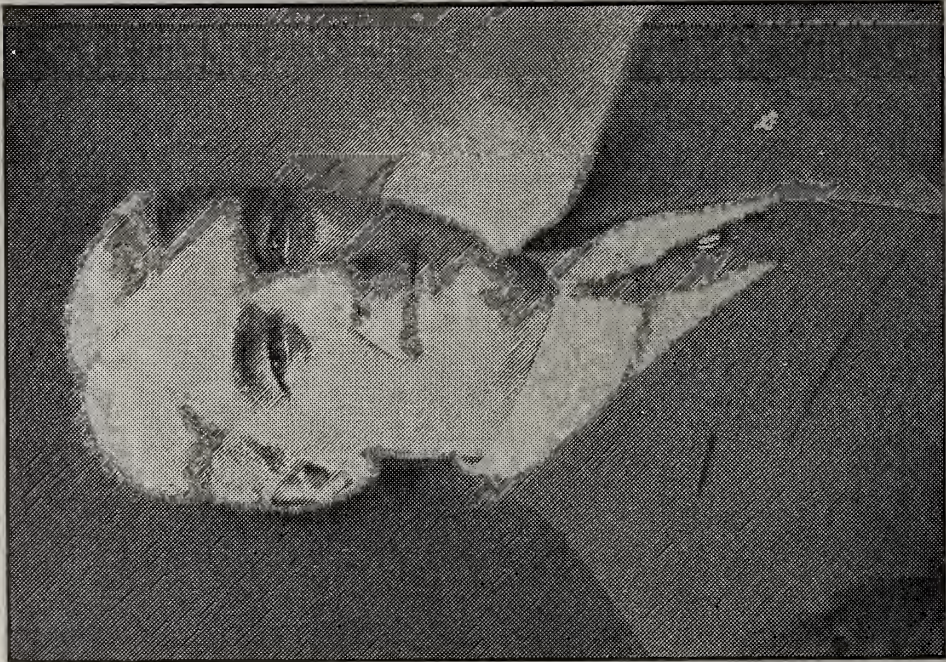


KINNEAP, DR. CLAUDE H.—Born in Lynchburg, Va., June 15, 1868; son of George A. and Margaret A. Kinneap. Educated U. S. Naval Academy, 1884, 1885 and 1886. Medical education University of Virginia, 1887 and 1888; graduate Jefferson Medical College, class of 1889. President Pierce County Medical Society of Washington, 1909. Worshipful Master Tacoma Lodge No. 22, F. & A. M., 1911; physician for M. W. A. and M. B. A. and Cushman U. S. Indian School. Physician and surgeon. Address, 527-528 Provident Buildings, Tacoma, Wash.



ENNIS, CHARLES H.—Born at Notawa, St. Joseph County, Mich. Educated in public schools of Webster City, Ia.; graduate of Georgetown University; District of Columbia; degrees of B. A. 1894 and Master of Laws 1895. Came West to Seattle, Wash., in 1906. Attorney-at-law; business address, 537 Burke building. Learned printer's trade. Worked in Government service at Washington, D. C., fifteen years. City Attorney of Georgetown, Wash. two years. Served in House of Representatives, Forty-first District, twenty-third session of Legislature, 1911. Politics, Republican. Chairman Committee on Harbors and Waterways; member of the Judiciary, Military and Railroad Committees.

LAFFIN, RICHARD T.—Born at Hancock, Me., in 1863. Educated in State of Maine. Came West to Seattle June 1, 1909. District manager Stone & Webster Management Association, Puget Sound district. Department and division superintendent Boston Elevated Railway, Boston, June, 1884 to 1901; Worcester Consolidated Railway Company as general manager from 1900 to 1904; Manila Electric Railway & Light Company as vice-president and general manager in charge of construction and operation from 1904 to 1908, six months prior to coming to Seattle, Para Electric Railway & Light Company, Para, Brazil. While there rearranged the operation of the property for the purpose of placing it on a paying basis. The Puget Sound district comprises the Seattle Electric Company, Pacific Coast Power Company, Puget Sound Electric Railway, Tacoma Railway & Power Company, Pacific Traction Company, Whatcom County Railway & Light Company, Bellingham & Skagit Railway Company, Puget Sound International Railway Company, Seattle-Everett Traction Company. Business address, 204 Pioneer building, Seattle, Wash. Member of Rainier, Arctic, Seattle Golf and Country Club, of Seattle, also of Union Club, Tacoma, and Cougar Club, Bellingham, Wash.



CORNELL, D. I.—Born in Knox County, Ohio. Came to Tacoma in 1889. President Durfey Investment Company, vice-president Nisqually Contract Company; general contractor. President Commercial Club and member Country Club. Business address, Savage-Scotfield building, Tacoma, Wash.



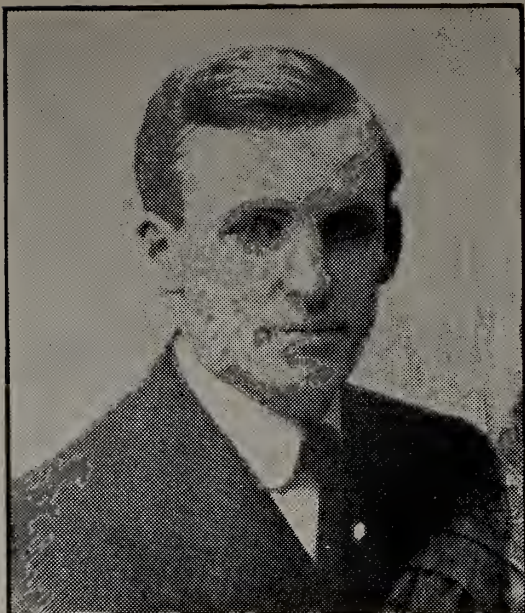
BEAN, LOUIS E.—Born Forsyth, Georgia. Common school education. Fifteen years with Stone & Webster. Manager of Bellingham Street Railway four years. Came to Tacoma in 1910 as manager of the Tacoma Railway & Power Company. Member Commercial, Country and Union Clubs.



ROSS, WILLIAM ROSS—Born in Philadelphia, Pa., August 1, 1852; son of Luther C. and Lettie Rust. President and treasurer and general manager Tacoma Smelting Company. Member Masons; Elks, Tacoma Country and Golf Club, Commercial Club and Chamber of Commerce, Builders' & Employers' Association, Seattle Golf and Country Club, Rainier Club, Seattle. Residence, 521 North Yakima avenue, Tacoma, Wash.



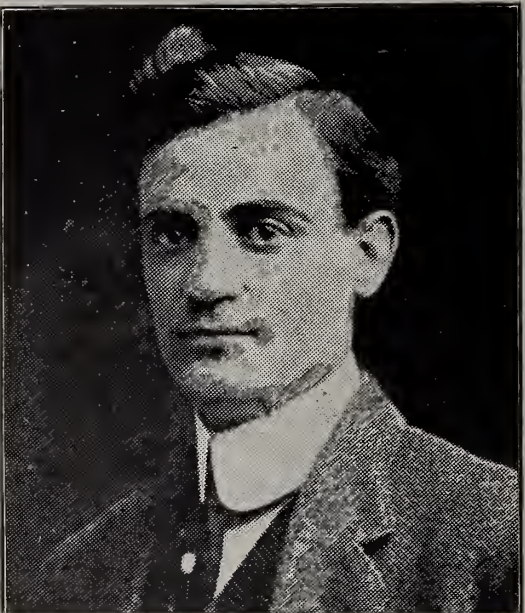
WILLIAMS, HENRY R.—Born in Palmyra, Jefferson County, Wis. Educated in Palmyra High school. Came West to Seattle October 1, 1905. President Chicago, Milwaukee & Puget Sound Railway Company, 611 White building, Seattle, Wash. Belongs to Union Club, Tacoma; Rainier Club, Arctic Club, Golf and Country Club, Seattle. Began work for the Milwaukee January 1, 1867, and has been in their employ continuously since.



FREY, EDWARD A.—Born in Lima, Ohio, January 22, 1888; oldest of six children; son of Jacob and Nannie Frey, both from Germany. Educated in grammar schools. At age of 14 started to learn machinist's trade in railroad shop. Took course in mechanical engineering at Ohio Northern University in fall of 1903. During vacations worked as machinist, until spring of 1906; accepted position as head draughtsman of mechanical department of one of the railroad divisions of New York Central lines until October, 1907, when he came West to Southern California for a short time, coming to Washington in April, 1908, taking a position in the Tacoma city engineering department for a few months. In March, 1909, he took a position in the County Engineer's office and since then has been Chief Deputy County Engineer. Has been asked to run in next election as County Engineer to succeed J. E. Noel. Member Young Men's Republican Club.



SCHEEL, HANS PETER—Born July 16, 1866, at Flensburg, Schlerwig-Holstein, Germany. Educated in country school near Flensburg. Came with parents to Mason City, Ia., in 1882. Worked as stone cutter until 1889, married and came West to Tacoma, Wash.; started in cut-stone business under firm name of Simpson & Scheel; in 1896 engaged in stone business at Spokane. In 1903 went into stone quarry business at Tenino, Wash.; acted as Secretary and Treasurer for the Spokane-Tenino business, with main offices at Spokane, until 1906. Then went with his family to Tacoma; now devoting entire time to the Hercules Sandstone Company quarries at Tenino, Wash., which are represented in all the larger cities in Washington, Oregon, Idaho and California. Resident address 103 East Road, Prospect Hill, Tacoma, Wash. Member of Commercial Club, Country Club and German Club.



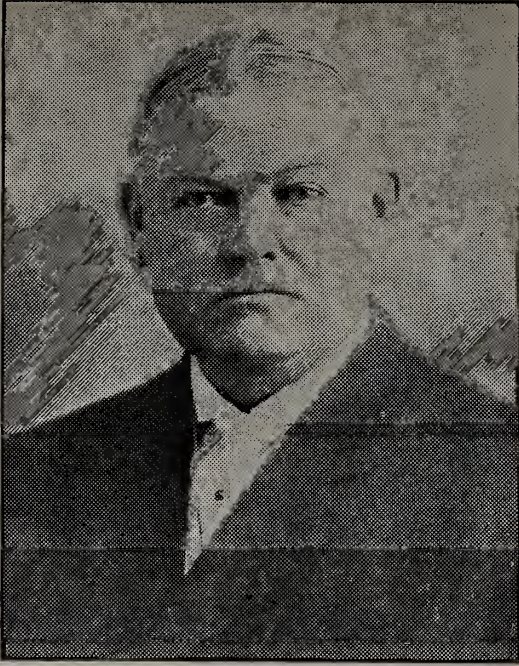
RUMMENS, GEORGE H.—Born March 16, 1878, Klickitat County, Wash.; son of William R. and Barbara R. Rummens. Prosecuting Attorney Asotin County 1903 to 1907. Deputy Prosecuting Attorney King County 1911. Admitted to bar in Washington May 13, 1899. Address, 1308 Alaska building, Seattle, Wash. Member of Arctic Club, B. P. O. E. No. 92, and Seattle Press Club.



CARR, CALVIN J.—Born February 8, 1879, in Tacoma; son of Howard Carr, first settler. Educated in Tacoma public schools, Tacoma High school and Tacoma Business College. For eight years in Treasurer's office. Member all Masonic bodies, Past Master Evergreen No. 51, F. & A. M.; Tacoma Chapter No. 4, R. A. M.; Ivanhoe Commandery No. 4, Knights Templar; Affi Temple Shriner, 32nd degree Scottish Rite Mason, National Union, Royal Arcanum, M. W. A., Red Men, Chinook Tribe No. 10, and



RICHARDSON, CHARLES—Born at Bainbridge, Georgia. Educated at Vanderbilt University. Arrived in Tacoma September, 1892. Lawyer. Now President of the Pacific Cold Storage Company. Business address, Pacific Cold Storage Company, N. P. Wharf, Tacoma, Wash. Member of Country Club and Union Club.



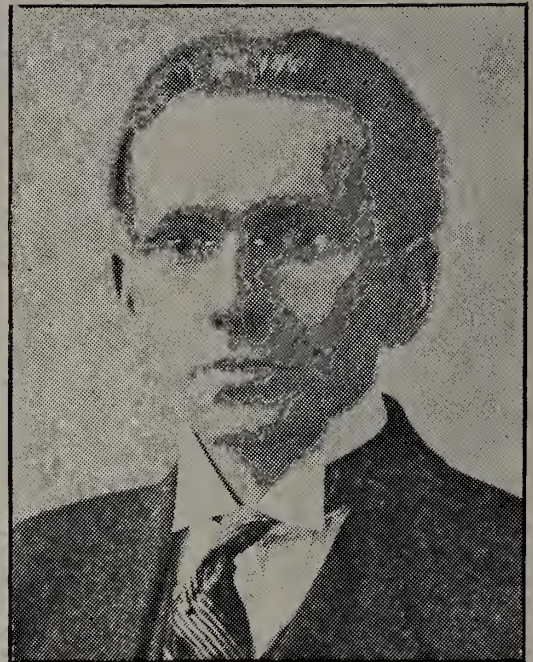
CONSIDINE, JOHN W.—Theatrical magnate, originator of "Made in Washington" slogan and carried out to the letter in the building of the Empress Theater, Tacoma, Wash. Mr. Considine is interested in all out-door sports, is President of several clubs, and a fancier of horses and dogs.



WITHERS, GUY—Born Mason City, Ill., in 1873. Common school education. Aetna Life Insurance at St. Louis for three years; Illinois Life Insurance, in charge Kansas City office, six years. Came to Tacoma in January, 1910. Second vice-president and manager of the Agency Department First National Life. Business address, 331 Perkins building. Prominent in Christian Endeavor movement in the Central West.



BRAEGER, OTTO—Born in Oshkosh, Wis., in 1873. Educated in common school. Settled in Portland, Oregon, in 1890. Foreman of sash and door factory for five years. Worked in Seattle. Started in business in Olympia several years ago. Appointed Chief of Police of Olympia in 1905 and served efficiently for one year. In 1910 was elected to the council from the Second Ward by a large majority.



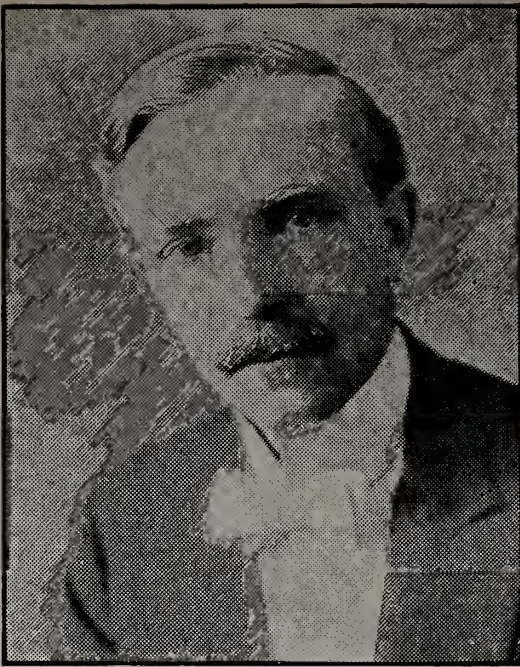
LAUBE, FRANK J.—Born in southern part of Wisconsin, near Janesville; son of Charles and Marguerite Laube of Bellingham, Wash. Graduated from the University of Wisconsin 1899; was instructor in history at the Tacoma High school for three years before taking up the practice of law. Married Gertrude McNair of Brodhead, Wis., June, 1901; daughter 5 years old. Came to Tacoma in June, 1904; now lawyer in Provident building, Tacoma, Wash. Member of the Washington State Legislature, elected 1910. Member Free Masons and K. of P.



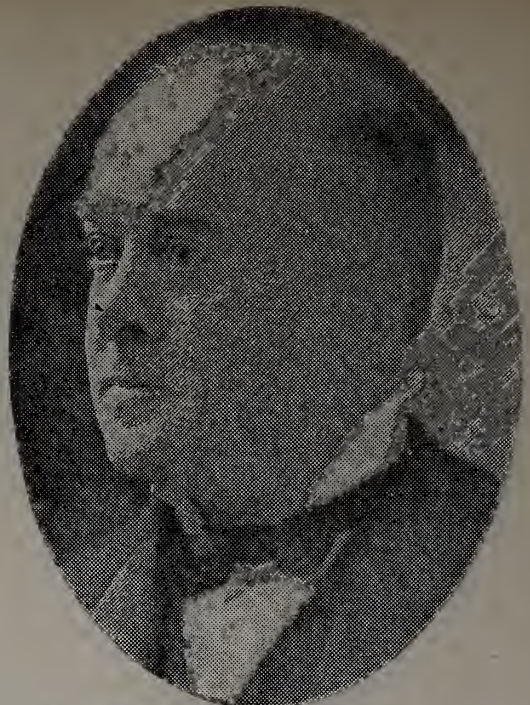
HARMON, FREMONT SMITH—Born Plymouth, Sheboygan County, Wis., July 28, 1856. Public school education. Started in business in book store at age of 13 years in Sioux City. Came to Tacoma in 1882. In 1883 opened furniture store in Tacoma; in 1888 opened wholesale furniture business, as F. S. Harmon & Co., Twenty-first and Pacific avenue, and is president and treasurer. Member of Union Club, Tacoma Country and Golf Club, Commercial Club and Chamber of Commerce. Noble of Aul Temple, Order of Mystic Shrine.



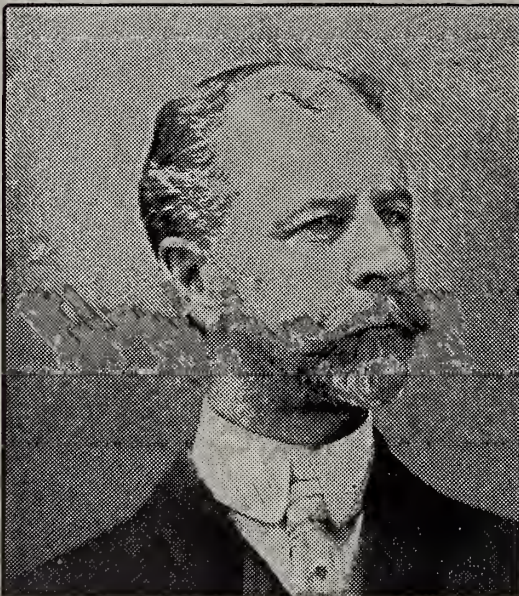
HYDE, CHARLES HENRY—Born in Caroline, Tompkins County, N. Y. Educated in district schools, town of Caroline, N. Y.; Horner Academy, New York State; Ithaca Academy, New York. Came to Tacoma April 1, 1891, entered business as wholesale grocer. Present address, 1922-8 Pacific avenue, Tacoma, Wash. Member of Commercial Club, Chamber of Commerce, Union Club, Country and Golf Club, and Tennis Club.



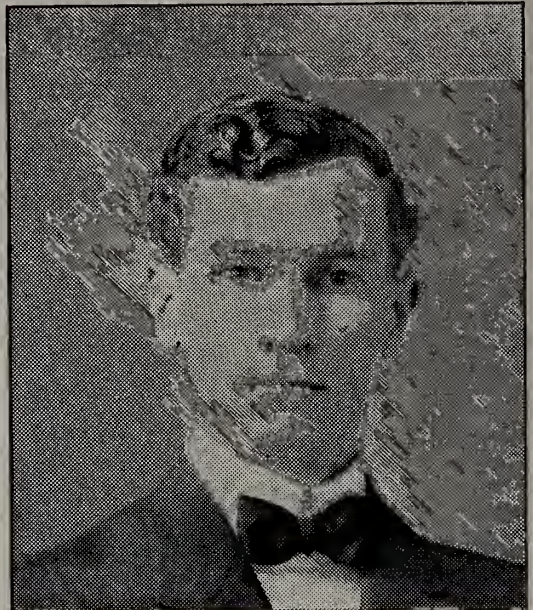
HEINLY, WEBSTER GUY—Born in Creston, Union County, Ia. Educated Creston High school; B. S. Knox College 1901; LL. B. Stanford University 1905. Secretary-treasurer Poin-dexter Senatorial Club of Pierce County, secretary Pierce County Republican Central Committee, secretary Committee Second Congressional District. Lawyer; firm, Dunkleberger & Heinly; suite 1002 Fidelity building, Tacoma, Wash. Member Masons, Odd Fellows, Phi Delta Phi and Phi Delta Theta fraternities, and Commercial Club.



JOAB, ALBERT EMERSON—Native of Ohio, educated in public schools of Terre Haute, Ind., graduating from High School there. Finished education at Phillips Exeter Academy and Yale University; Superintendent Schools, Colorado Springs, and Chair of Mathematics in University School of Chicago. Admitted to practice of law, and practiced in Denver and Chicago, later coming to Tacoma, where has practiced ever since. Member Masonic Order and Knights of Pythias, National Guard of Colorado, in service against the Ute Indians; member of National Guard of Washington for twelve years, with title of Colonel. Has taken an active part in politics, always a Republican, often stumping city, county and state.



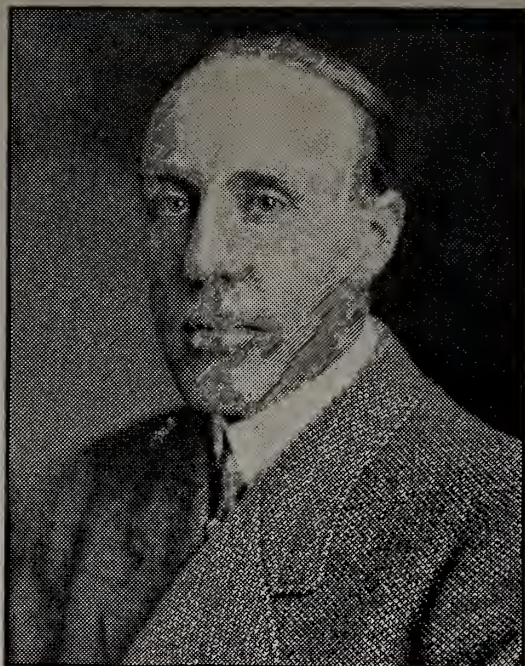
CLAYPOOL, CHARLES ETHELBERT—Born at Crown Point, Lake County, Ind., 7th of December, 1861. Educated in public schools of La Fayette, Indiana, and Central Normal College, Danville, Indiana. Came West to Tacoma, Washington, in summer of 1887, Attorney and Counsellor at Law. Present business address, Funk-Volland Building, Olympia, Washington. Admitted to bar at La Fayette, Indiana, 1885; to bar of Washington Territory at Tacoma, 1888; to United States Circuit Courts and Court of Appeals, 1890; to Courts of District of Alaska, 1900; to Supreme Court of United States, 1905. Law partner of late Hon. F. W. Cushman in firm of Claypool & Cushman at Tacoma for twelve years; Assistant United States Attorney, 1897-1900; Commissioner Circle, Alaska, 1900-4; general practice, Fairbanks, Alaska, 1904-8.



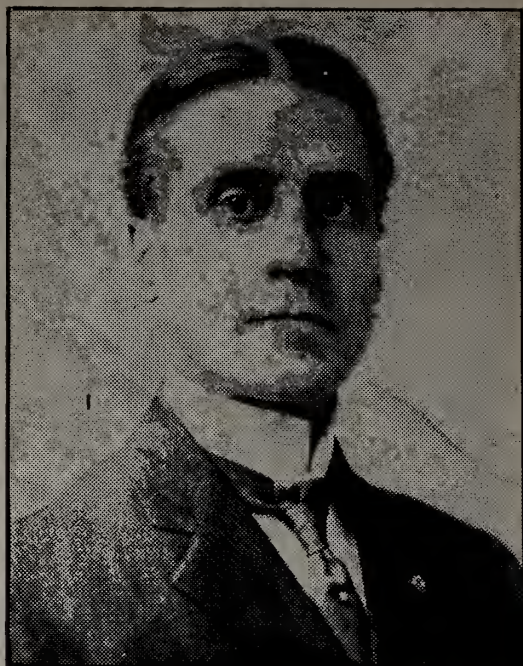
TODD, HUGH CLIFFORD—Born in Cheney, Spokane County, Wash. Educated in public schools of Spokane, High School of Davenport, Washington State College at Pullman and graduate of Georgetown University, Law School of Washington, D. C. Native of Washington state. Lawyer, with offices at 204-7 Collins Building, Seattle, Wash. Belongs to Seattle Commercial Club, Knights of Pythias, and other Fraternal Orders. Active in Washington politics for many years; County Clerk of Whitman County 1907-8. Represented Whitman County as Democrat in the session of the Legislature of 1909 and 1911. Expected to be candidate for Democratic nomination for Governor 1912. Has done public speaking for several years in all parts of the state.



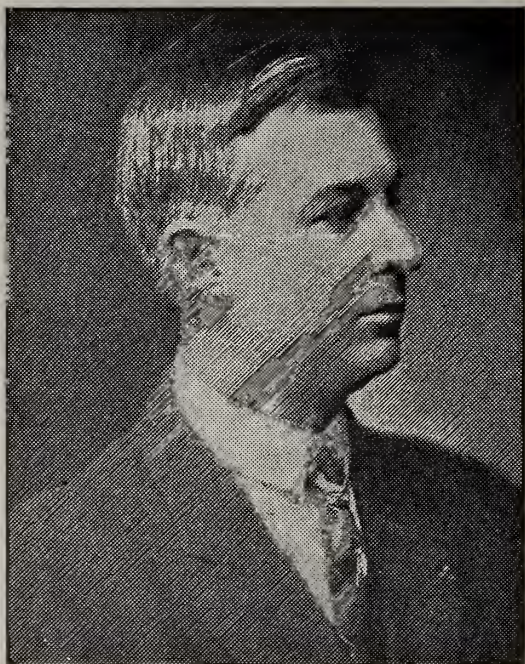
ALEXANDER, HUBBARD FOSTER—President Alaska-Pacific Steamship Company; office in Perkins building. Belongs to Country and Commercial Clubs, Chamber of Commerce, Elks, Rainier Club (Seattle), Transportation Club, and Merchants' Exchange, San Francisco; California Club, Los Angeles; Washington Commandery, Loyal Legion.



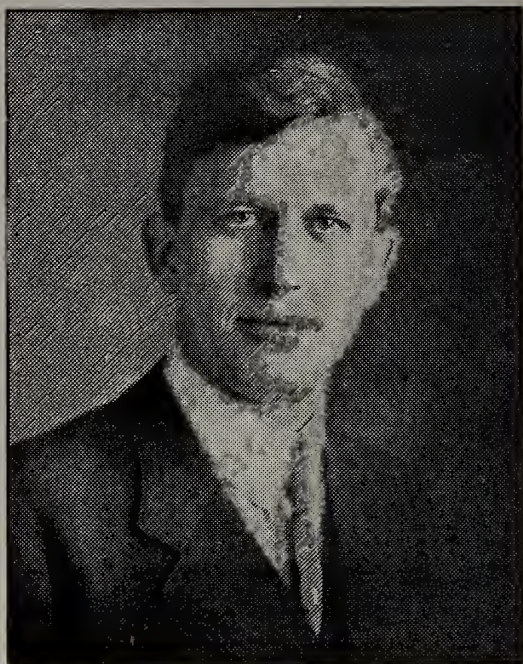
ALLYN, FRANK, JR.—Born in Keokuk, Lee County, Iowa. Educated at St. Matthew's Hall, San Mateo, Cal., and Leland Stanford University. Admitted to the bar of Washington in 1897. Practiced law short while and then went into surety bond business, later branching out into other insurance lines under firm name of Frank Allyn, Jr., & Co., then, in 1908, organized the corporation of Allyn-Hill Company, general insurance lines, particularly large lines in casualty and surety field. Now president of Casualty Underwriters' Association of Tacoma, a particularly strong casualty organization of all Tacoma agencies, and president of Allyn-Hill Company. Member Tacoma Country and Golf Club, Sigma Nu Fraternity of Stanford University. Present business address is 115 South Twelfth street, Tacoma, Wash.



KING, EDWARD BEAUMONT—Born in Augusta, Ill., May 25, 1873; son of Charles Wesley and Sarah Catherine King. Graduated from Wayne High school, Nebraska, and Nebraska State Normal school. Undertaker; address, 730-32 St. Helens avenue, Tacoma, Wash. Member Commercial Club and Chamber of Commerce, F. & A. M., Affil Temple, I. O. O. F., K. of P., I. O. R. M., M. W. A., A. O. U. W., National Union, P. O. S. of A.



SHORT, GEORGE RANDOLPH—Born April 9, 1879, at Baltimore, Md. Educated in common school. Came to Tacoma, May, 1902. Admitted to the bar of the State of Washington in May, 1909. Business address, 904-5-6-7-8, National Realty building. Members Elks, Arctic Club of Seattle, P. O. S. of A.



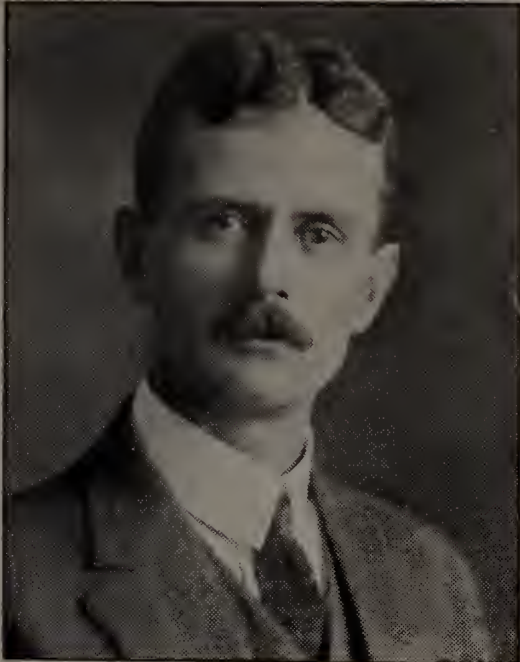
POST, HERBERT E.—Born in Beardstown, Ill. Came to Tacoma in March, 1904. Certified public accountant; office, Perkins building. Formerly associated with Stone & Webster, W. P. Hopping & Co., International Fisheries Company. Spring of 1911 audited the books of the City of Tacoma. Member of University Club and Commercial Club.



BELL, T. J.—Born Mount Pleasant, Durham County, Province of Ontario, Canada. Educated in public schools and Collegiate Institute. Taught school ten years. Came to Tacoma in December, 1893, went into printing and publishing business. Now at 717 Commerce street, Tacoma, Wash. Belong to Commercial Club & Chamber of Commerce. Editor and publisher of Tacoma New Herald and senior member of the Bell Press, Publishers. Was member of State Legislature 1909-1910. Prominent member of the Improved Order of Red Men, also belongs to the Masonic Fraternity, Foresters of America, Fraternal Order of Eagles, and Loyal Order of Moose.



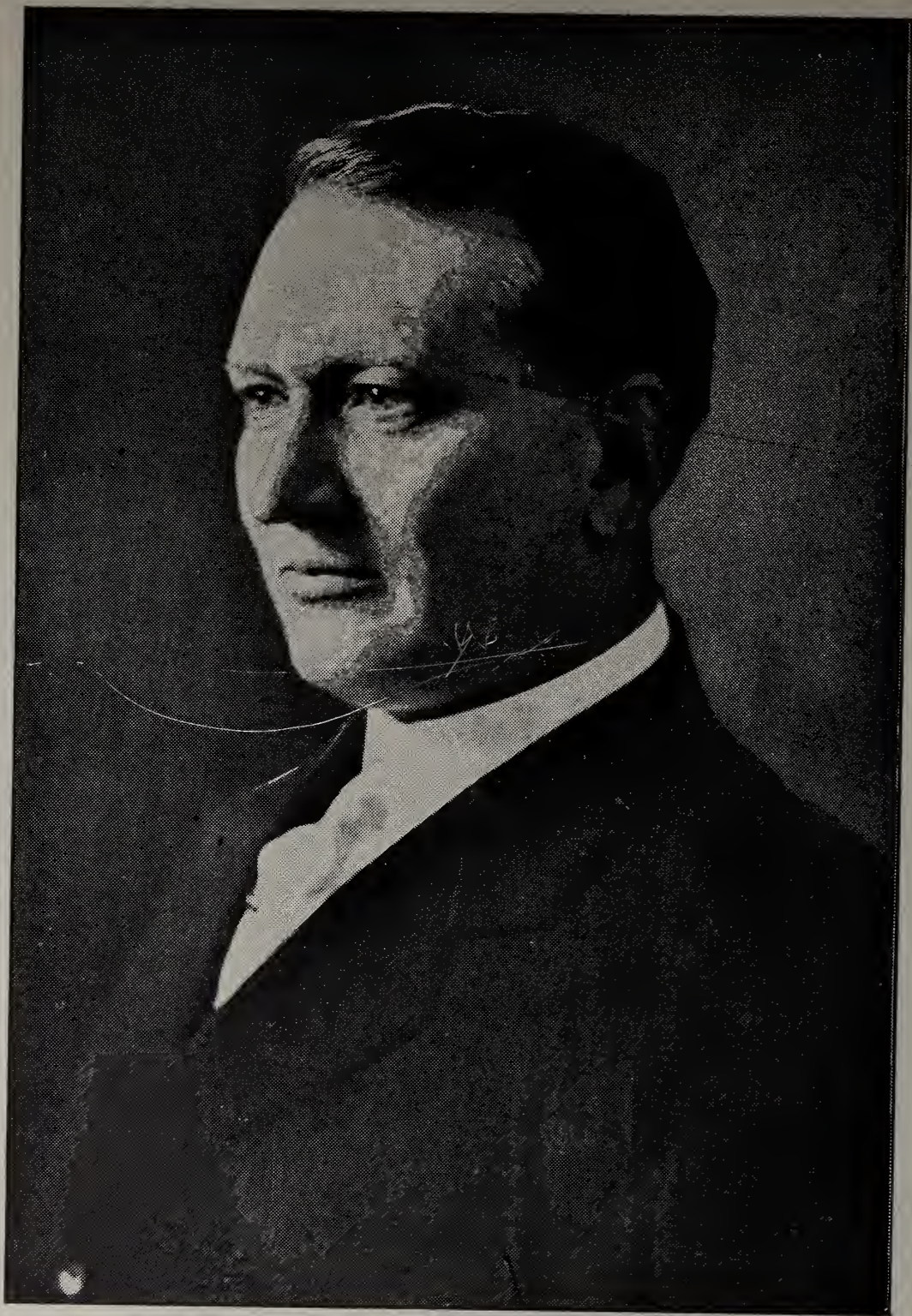
THACKER, GUS L.—Born in Springfield, Mo., October 17, 1883, son of James G. and S. A. Thacker. Educated at University of Washington Law School, '06. Assistant Prosecuting Attorney of Lewis County, 1907-1909. Member Elks, K. of P., W. O. W., A. O. U. W. Rooms 11 and 12, Coffman-Dobson Bank Building, Chehalis, Wash. Admitted to bar May 28, 1906.



ALLEN, ETHAN—Born November 4, 1868; son of Ethan and Ann Rachel Musgrove Allen, Lexington, Mo. Came to Tacoma in 1891. Printing contractor in Tacoma for 21 years. Member Commercial Club, life member B. P. O. E.



LAMBORN, FRANK M.—Born December 8, 1864, in Lexington, Mo.; son of William W. and Addie Weaver Lamborn. Came to Tacoma in 1891. Joint manager Allen & Lamborn Printing Company. One of fifteen freeholders who drafted the present Commission form of charter for Tacoma. Treasurer Tacoma Savings & Loan Association. Member all Masonic lodges, Shriner, treasurer of B. P. O. E., Lodge No. 174; member Commercial Club.



APPLEBY, STEPHEN CECIL MONTAGUE—Born July 20, 1869, at Clarksburg, Ontario, Canada. Educated in public and private schools. Shattuck School, Faribault, Minn. College of Law, University of Minnesota; degree LL. B. Went to St. Vincent, Minn., in 1881, St. Paul, 1883, Boston, Mass., 1897, and came to Tacoma in 1903. Farmer 1884 to 1887. Messenger to teller in Second National Bank, St. Paul, 1891 to 1896. With N. W. Harris & Company Bond House, St. Paul, 1897. Clerk National German American Bank, St. Paul, 1898-1902. Assistant cashier Lumberman's National Bank, Tacoma, 1903. Cashier Pacific National Bank, Tacoma, 1907. Present business address, Pacific National Bank, Tacoma, Wash.



JUDSON, EDWARD BIRDSEYE—Born at Winslow, Ill., December, 1859. Son of Charles Oberfield Judson and Ellice Rust. Came to Tacoma in 1889, organized and operated Washington Burial Case Co., now Willamette Casket Company, until January, 1903. Now in the real estate business. Business address, Fidelity building. Married in 1888, has two sons, Thomas and Edward. Member of the Union Club, Country Club, Elks and Mason Lodges, trustee Tacoma Commercial Club and Chamber of Commerce, National, State and local societies Sons of American Revolution, secretary of the State society.



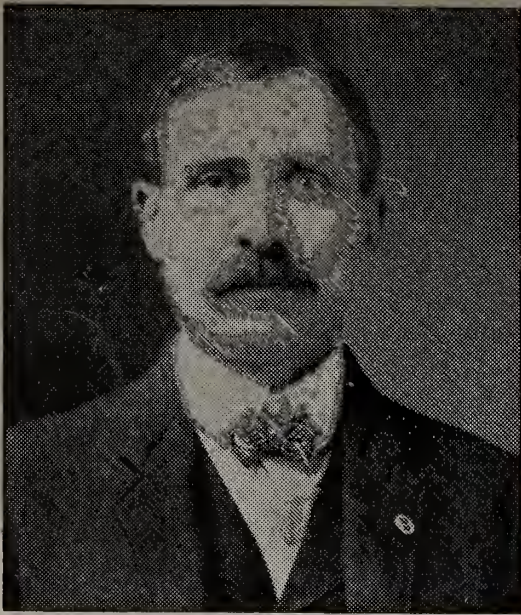
MCNEELY, JAMES—Born at Carleton Place, Ontario, June 21, 1861. Educated in common schools and the midnight oil. He came to New York when 12 years old, to Wisconsin when 14, and to Buckley, Wash., in 1888, where he still resides. Entered business as lumberman, and he is secretary-treasurer of the Valley Mill Company of Buckley, Wash., and director in the Defiance Lumber Company of Tacoma, Wash. He was chairman of the Committee on Roads and Bridges during the last session of the Legislature and is an enthusiast for good roads, and was an acknowledged leader of the House. He is now a candidate for Congress from the Second Congressional District. Member of the Tacoma Commercial Club and the Country and Golf Club.



DAVIS, JAMES H.—Born in Harrison County, Indiana, August 22, 1866. Educated at De Pauw University. Came West to Colorado in 1884, and to Tacoma March 10, 1889. County auditor January, 1901, to January, 1905. Member of State Board of Control 1905 to 1909. Member of twelfth Legislature session from Thirty-seventh Representative District of Washington and chairman Committee on Appropriations. In real estate, insurance and loan business. Present business address, 320-21 California building. Member of Tacoma Commercial Club.



LITTLE, THOMAS W.—Born in Lawrenceburg, Ind. Educated at Wabash College, Crawfordsville, Ind. Came to Tacoma and entered automobile business; present address, 422-24-26 St. Helens avenue. Member Commercial Club, Elks, Odd Fellows and M. W. A.



SCHWINN, HENRY JOSEPH—Born in Rome, New York, and educated in common schools. Came West to Denver in 1878, moved to Portland in 1884. In real estate and insurance and loan business in Tacoma, to which place moved from Portland in 1887. Business address is Tacoma Building. Belongs to Commercial Club & Chamber of Commerce, President Lakeside Country Club, and President of Buena Rod and Gun Club. Followed prospecting in early days in Colorado, railroading in Portland and Tacoma; went into grocery business in 1894 in Tacoma; mercantile business, Clear Lake, Wash., in 1898. In February, 1895, opened present business in Bernice Building. Present business address, 315-16-17 Bankers Trust Building.



DICKSON, GEORGE E.—Born at Richmond, Canada, October 27, 1861. Educated at St. Francis College, Richmond, province of Quebec. Came West to Ellensburg, Wash. Formerly in general merchandise business; several years in the investment, loan, insurance and real estate business. Prominent in business and politics of the State of Washington. Served for many years as chairman and secretary of the Kittitas County Republican Central Committee and also as a member of the Republican State Central Committee. Was elected State Representative for the Nineteenth District (Kittitas County) and served in the 1903, 1905, 1907 and 1911 sessions. Served as president of the Alaska-Yukon-Pacific Exposition Commission of the State of Washington during the A.-Y.-P. Exposition held at Seattle in 1909. Present business address, Ellensburg, Wash. Member of Arctic Club, Seattle, and Ellensburg Commercial Club.



HOLST, CHRISTOPHER J.—Born at Bloomer, Wis., Chippewa County, in 1878. Educated in public schools at Bloomer. Located in Whitman County, Wash., in 1901; engaged in farming and grain business. Appointed postmaster at La Crosse, Wash., in 1907, and held position until June 1, 1910, when he resigned to accept position of State Grain Inspector. Member of B. P. O. E., I. O. O. F. and Scandinavian Brotherhood of America. Address 302-304-305 Savage-Scofield Building, Tacoma, Wash.



KENNEDY, H. E.—Born at Teaswater, Ontario, December 31, 1873; son of John E. and Ellen Kennedy. Came to Seattle, August, 1889. Proprietor of Hotel Kennedy. Clerk of appropriation committee Senate, 1909 session. Representative from Forty-fourth District, King County, session 1911. Member of Masons, W. O. W., Press Club, Seattle; Seattle Athletic Club, Commercial Club. Secretary Washington State Hotel Association, secretary Seattle Hotel Men's Association. Married; two sons.



FOWLER, CHARLES EVAN—Civil engineer. Born Bartlett, Washington County, Ohio, February 10, 1867, son of Chauncey T. and Phoebe W. Fowler. Educated Ohio State University; studied civil engineering. Married Lucille H. Doyle, December 4, 1890. In practice as civil engineer since 1886. Now president International Contract Company; International Dredging Company; Washington Marine Company; ex-president Board of trustee Seattle Chamber of Commerce; Seattle Exposition 1909; Park Commissioners; Madrona Heights Improvement Club; member American Society C. E., Canadian Society C. E.; director Pacific Northwest Society of Engineers. Republican. Author "Cofferdam Process for Piers," 1898; "Ordinary Foundations," 1904; "General Specifications for Steel Roofs and Buildings," 1894; "Engineering and Contracting," 1908; contributor to engineering journals. Home, 1600 Thirty-fifth avenue; office, Central building, Seattle, Wash. Member Rainier, Seattle Athletic, Alaska, Seattle Driving Clubs.



MURPHY, JESSE F.—Born in Pike County, Ohio, June 23, 1858; son of James Madison and Mary Jane Murphy. Educated in South Salem Presbyterian Academy, 1878-1880; taught in public schools in Ross County, Ohio. Married in 1884 to Myrtle L. Lindley of Bainbridge, Ohio. Two daughters. Came to Olympia, Wash., in 1888. Manager for life insurance company. Appointed Registrar U. S. Land Office at Olympia in 1894 by President Cleveland; served term of four years; re-elected with splendid record. Equitable Life Association Society of New York for last ten years. Is candidate for office of State Insurance Commissioner at next Democratic primaries. 32nd degree Mason and Mystic Shriner. Residence, 1526 Sixteenth avenue, Seattle, Wash.



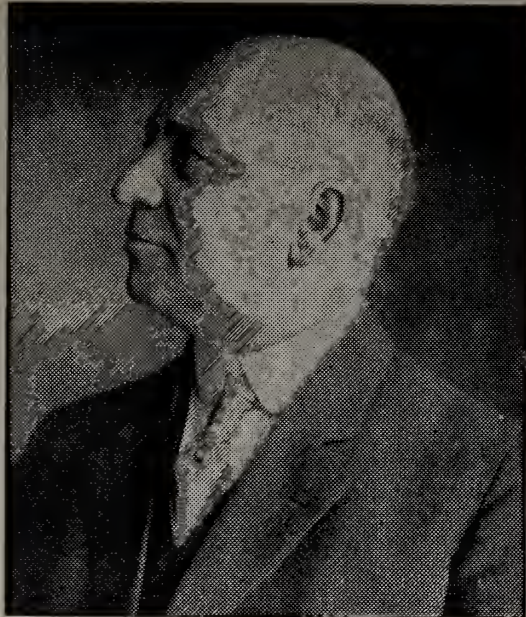
WOOLSEY, GEORGE VINTON—Born in New Jersey, April 18, 1883. Common school education. Started in New York City, at the age of 18, in wholesale tea and coffee business for five years, manufacturing business for four years. Came to Tacoma September 1, 1910; went into real estate; acquired Woolsey Addition (Lawler-Pentecost Addition) in West End of Tacoma, in spring of 1911, and at present engaged in promoting this addition, with an office at 1221 Fidelity building.



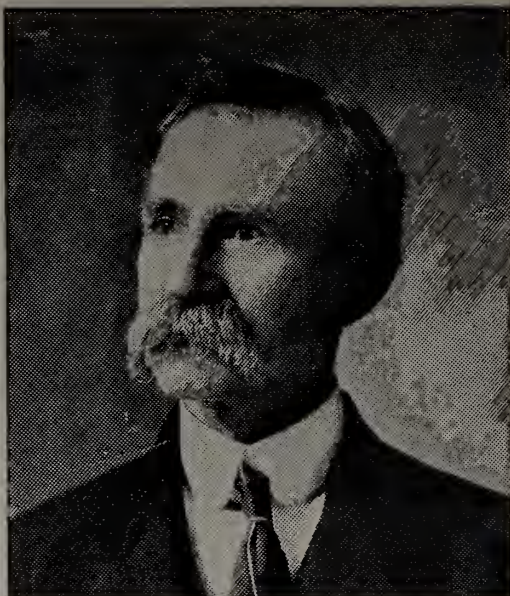
FRANCE, HENRY M.—Born July 4, 1877, in Louisiana. Educated in Milwaukee and New Orleans public schools. Came West to Seattle and in business as cigar manufacturer. Present business address is 946 Pacific avenue, Tacoma, Wash. Started with Stewart & Holmes Drug Company, Seattle, 1896; left their employ to engage in cigar business in Seattle in 1901. Organized Morgan Cigar Company of Tampa, Fla., in 1905; today holds position as secretary and treasurer of same. Founded the Prince Cigar Company of Tacoma in 1906, of which he is now president. Member of Rotary Club, Commercial Club, Kennel Club, Tacoma Auto Club, and life member Seattle Athletic Club.



SCHIVELY, J. H.—Born September 28, 1858, Philadelphia, Pa. Common school education. At age of 21 years taught school and operated printing plant under Bishop William Taylor in Santiago, Chile. Returned to United States in his 23rd year; four years at Dickinson College, Pa.; graduated in 1886 with B. of A. degree. Subsequently given M. of A. degree. In 1890 returned to Seattle from India; 1891 edited Anacortes American; 1892 editor Bellingham Bay Express; 1894 elected to Legislature from Bellingham Bay, served 1895 session; 1898 elected Secretary Seattle Chamber of Commerce; 1901 appointed Deputy Insurance Commissioner; 1908 elected Insurance Commissioner for a term of four years.



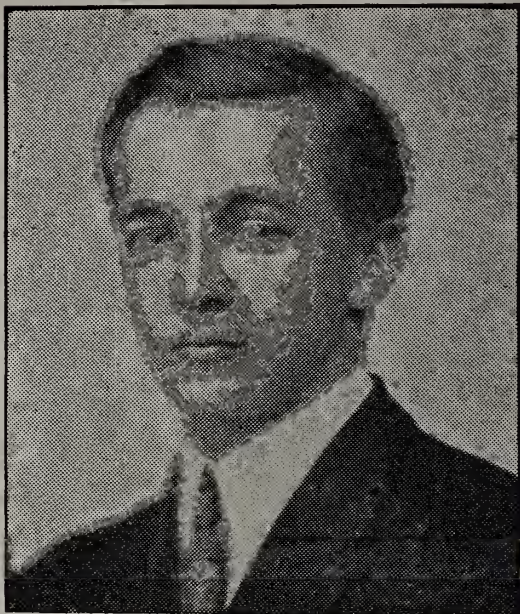
PRATT, LOUIS W.—Born August 14, 1862, at Fredonia, Chautauqua County, New York. Attended Albany public and High schools; Williams College (A. B. 1883); Albany Law School (LL. B. 1885). Admitted to New York bar in 1885. President Albany Evening Union until sold to Times-Union in 1891. President Albany Land Improvement & Building Company and developed "Pine Hills," the West End residence section of Albany, N. Y. Came to Tacoma in 1900. Editorial writer Ledger and News 1900 to 1905. Secretary Tacoma Chamber of Commerce 1905 to 1908. President National Realty Company 1907 to date. Married Geraldine Schuyler of Albany in 1885. Has two daughters and one son living and lost a daughter, Helen, in 1904. Son now a student at Williams College (class of 1913). Resides at 415 North Sixth street, Tacoma, Wash.



McKENZIE, E. F.—County Clerk of Pierce County, Wash., and President of County Clerks' Association of the State of Washington. Was born and educated in the State of Indiana. Came to Tacoma with family in 1888, where he has since lived, being engaged the most part in the business of contracting and building. Member of the Commercial Club and a great many other organizations in the city, and has always taken an active part in public and political affairs. Has always advocated and worked for enforcement of law and order, and believes that a public official should serve the people with an eye single to their best interests, the requisite of which is honesty, efficiency and economy, all of which has been his practice through life, thus gaining for him the confidence and esteem of those who know him best.



PERKY, R. C.—Born at Fort Collins, Larimer County, Colorado. Educated in public and High schools of Denver, Colo. Came to Seattle in 1900. General agent Canadian Pacific Railway lands; secretary and treasurer Perky Investment Company; offices, 108 Cherry street. Spent three years in Philippines as quarter-master agent commanding Government transports. Returned to Seattle, September, 1904. Uncle, Henry D. Perky, invented Shredded Wheat. Was chief real estate expert for City of Seattle for five years during all large re-grading and widening condemnations and operations. Organizer and president for two years of Seattle Real Estate Men's Club. Member Arctic, Elks and Masons.



ECKERT, HARRY BERNARD—Born at Auburn, Cayuga County, N. Y. Educated in Auburn Grammar Schools, Tacoma High School. Came West to Tacoma in 1890. In business of contracting. Manager of the Washington Engineering Company of Tacoma; at present engaged in building the vertical lift bridge over the Puyallup waterway for the city. Has been extensively engaged in contracting business in the Northwest. Member of Commercial Club. Present business address, 513-14 Savage-Scotfield building.



ZELLER, JULIUS CHRISTIAN—Born at Spring Bay, Woodford County, Ill., December 15, 1871. Academic education completed Elisk Academy, connected with Northwestern University, in 1889, covering the then three years' course in two; graduated 1893 from College of Liberal Arts and the School of Oratory, with degrees of B. of A. and B. of O. Entered work of ministry in 1895; ordained in the Methodist Episcopal Church 1900; 1904 studied in the University of Chicago in the Divinity School. Graduate of School and School of Education, 1904 receiving B. of A. and B. of D. degrees from the University of Chicago; 1910 granted degree of Doctor of Civil Law. In 1905 elected to the Chair of Philosophy and Sociology in Illinois Wesleyan University. Now President of University of Puget Sound, Tacoma, Wash.



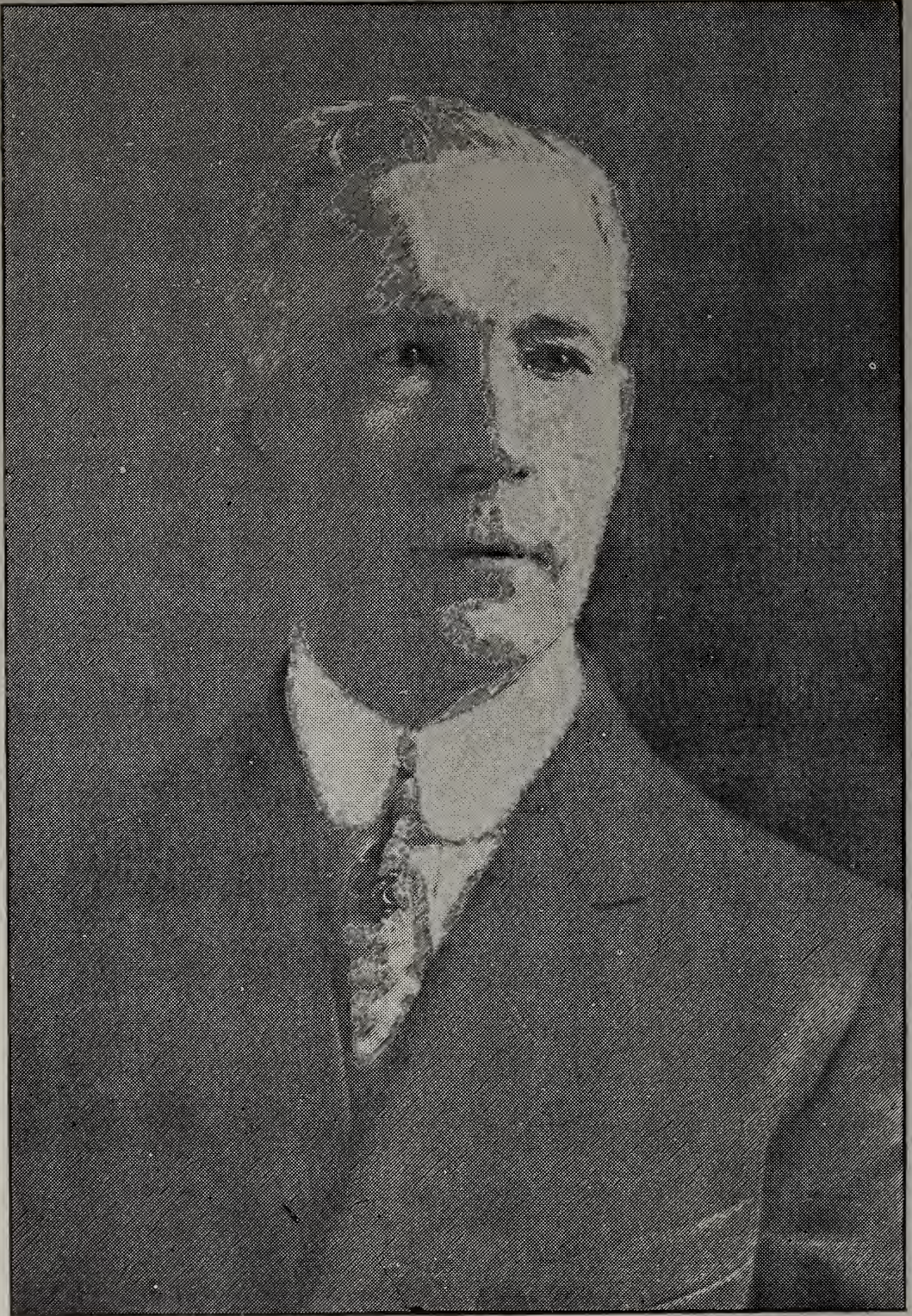
M'KAY, DONALD D.—Born Prince Edward Island in 1862; son of William D. and Elizabeth B. McKay. Dean of Whitworth College 1908-11. A. B. Normal school training, Prince of Wales College, P. E. I.; A. B. University of Manitoba, Canada, 1889; divinity student Manitoba College 1889-91; B. S. post-graduate Princeton 1892-3; A. M. University of Manitoba 1895; post-graduate student University of Minnesota 1898-1902; pastorate Minneapolis 1898-1908; D. D. Macalester College 1904; Whitworth College 1908. President Whitworth College 1911. Member I. O. O. F.



QUIGLEY, ANDREW JARDINE—Born at Dumfries, Scotland; son of Thomas and Janet Quigley. Educated at Normal School, Glasgow, Scotland; Normal School, Ypsilanti, Mich.; Agricultural College, Lansing, Mich.; and Northwestern University, Evanston, Ill. Certified public accountant, scientific manager, efficiency expert. Vice-president Washington State Society of Accountancy, director of Washington Society of Certified Public Accountants, fellow of American Association of Public Accountants, general manager of Seattle Bureau of Public Efficiency, auditor of the First Presbyterian Church. Member of the Seattle Commercial Club and of the Municipal League of Seattle.



DOVELL, G. ASHTON—Lawyer, born in Madison County, Va., June 8, 1885; son of Early Beauregard and Lucy Bond Dovell. A. B. of William and Mary College; attended the University of Virginia School of Law; early life spent in Virginia. Admitted to all the courts of Virginia in 1910. Opened an office in Tacoma, Wash., in May, 1911, as senior member of the firm of Dovell, Cameron & Dovell. Member of Kappa Alpha Fraternity. Office 1110-11 Fidelity Building.



MILNER, WILLIAM WILSON—Born Union City, Obion County, Tenn. Educated at Obion College, Troy, Tenn.; Clinton College, Clinton, Ky.; then took a business course in commercial school at Evansville, Ind. Came to Tacoma in April, 1888, entered men's clothing and furnishing business. Present business address, corner Second avenue, at James street, Seattle, Wash. Member Seattle Chamber of Commerce, Commercial Club, Athletic Club and Arctic Club.



BERRY, PRESTON A.—Born Montezuma, Ind., March 27, 1885, son of John W. and L. M. Berry. Jeweler, Pacific avenue, Tacoma, Wash. Came to Tacoma in 1887. Educated in Tacoma grammar schools, three years Tacoma High school, one year University of Puget Sound. Started in business with George J. Chapman Company, Tacoma Theater building, December 1, 1903, as secretary and treasurer of same; March 1, 1911, purchased the interest of George J. Chapman, also stock of E. I. Salmson, 930 Pacific avenue. Located at 930 Pacific avenue. Member of Commercial Club, Rotary Club, and Lakeside Country Club, also American and National Union.



HAETMAN, JOHN P.—Lawyer and farmer. Born on a farm near Harveysharsh, Ind., July 3, 1857, and his parents were John P. Hartman, a Civil War veteran of more than four years, and his mother, Mary Ann (Shies), both natives of Indiana. He emigrated with his parents to the frontier of Nebraska at the age of 14 years and remained there until coming to Washington in January, 1891. Educated at the University of Nebraska, last degree being M. L. Practiced law for eight years at Kearney, Neb., and ever since coming to Washington. Lived the first five years in Tacoma, and since in Seattle. Republican in politics. Presbyterian in religion, and likes farming above the practice of law. Has never held office except for one term as Incumbent of the University of Washington. Member of all principal clubs of Seattle. Married to Caroline E. Bryden, September, 1883, and has three children, Dwight, Harold and Robert.



GILL, CLARK N.—Born at Williamson, Illinois. Educated in public schools of Waco, Texas. Came to Portland in 1891 and entered candy manufacturing business. Studied Psychology under Dr. Victor Rocine; came to Seattle in 1902 and published a weekly paper, "The Message of Life." In 1904 entered real estate sub-division townsite business in Seattle and Tacoma, Wash. Present address, Tacoma, Wash.



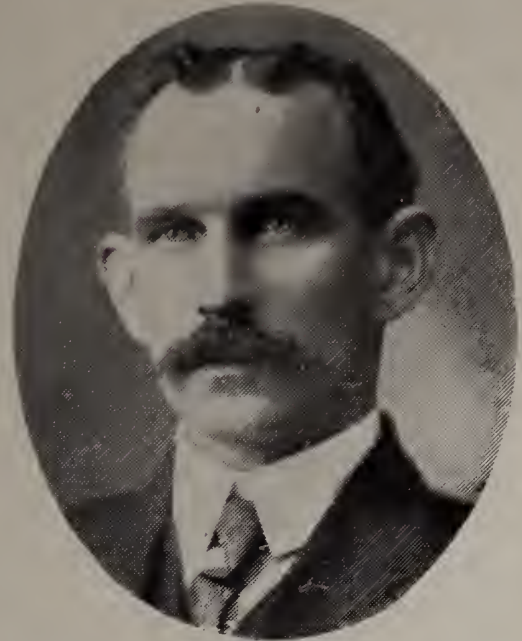
BUCKLEY, WILLIAM BREWSTER—Born in Concord, Pa., January 9, 1865; son of William and Nancy Buckley. Graduated from Shelby High school, Shelby, Ia.; attended Cornell College, Mt. Vernon, Ia., four years, and State Medical College, Iowa City, Ia., two years. State superintendent public schools for fifteen years in Iowa. Government civil engineer of Alaska from 1889 to 1892. Undertaker, address, 732 St. Helens avenue, Tacoma, Wash. Member of Commercial Club, Chamber of Commerce. Affil Temple, Tacoma Lodge No. 22, F. & A. M.; Ivanhoe Commandery No. 4, Tacoma Chapter Rose Croix, W. O. W., Eagles, Fraternal Aid Society, L. O. of M.



FRIEND, ERNEST A.—Born at Oxford, Miss., December 11, 1878. Graduated from University of Mississippi before 1898. Commenced business in St. Louis, 1890. Came West to Tacoma in 1906; associated with Wynkoop-Vaughan Company for two years. June, 1909, founded the E. A. Friend Company, corner Eleventh and Commerce Streets, Tacoma, Wash., of which he is President. Member of Rotary Club.



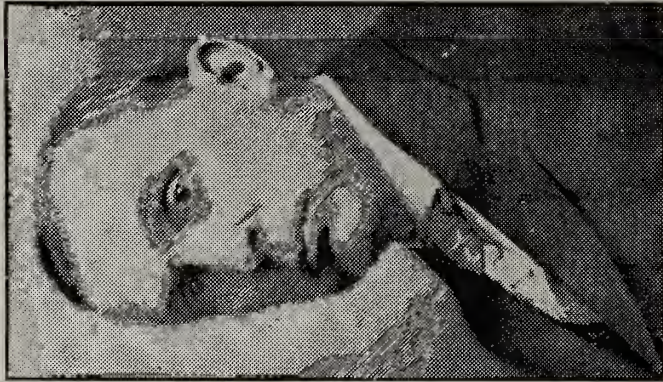
WRAY, WILLIAM—Born in England, September 23, 1876; son of Samuel and Elizabeth Wray. Graduated from Seattle High school in 1897; special course Washington State University. Member House of Representatives 1911. Lawyer; business address, 556 Empire building, Seattle, Wash. Member Red Men, I. O. O. F., counsel for Modern Woodmen of America, charter member Young Men's Republican Club, Seattle Bar Association and Washington State Bar Association.
P. S. O. A.



STEPHENS, E. MILTON—Residence, Monroe, Snohomish County, Washington. State Senator present term.



LYNN, CLARENCE O.—Born at Wyandot, Ill., September 20, 1878; son of John P. and Marie C. Lynn. Came West May 4, 1901. Employed by Hoska, undertaker, for four years. Since 1905 in business for himself. Business address, 910-912 Tacoma avenue; one of largest undertaking parlors in the city.



DAVIES, LLEWELLYN—Born at Neath, Bradford County Pa. Educated Susquehanna Collegiate Institute at Towanda, Pa., also at Cornell University, Ithaca, N. Y. Came to Ritzville, Wash., in November, 1892. Attorney up to April, 1905. Address, 413-H5 Mehlhorn Building, Seattle. Belongs to Commercial Club of Seattle, Masons and Knights of Pythias. Served one term as Prosecuting Attorney of Adams County. Moved to Davenport, in Lincoln County, June, 1896; moved to Seattle in June, 1911. Appointed State Dairy and Food Commissioner by Governor Mead in 1905; re-appointed by Governor Hay and still serving.



BULL, OLOF—Violinist; born Undersvik, Sweden, March 31, 1852, son of Olof and Catherine Bull. Musical education in Undersvik, Sweden; appeared in concerts at age of eight years. Moved to St. Paul, Minn., in 1869; conductor of orchestra of Corinne Opera Company of Boston, Mass., 1882; 1884 accepted position to take charge of violin department of Chicago Musical College at Decatur, Ill., and conductor of Decatur orchestra; 1888 became owner of Decatur Musical College, Decatur, Ill. Became musical director Tacoma Theater in 1890. Member of Lebanon Lodge, F. & A. M., Tacoma; Affin-Temple, 32nd Degree Scottish Rite; B. P. O. E., I. O. R. M., Scandinavian Brotherhood. Director Tacoma Symphony Orchestra. Address, Temple of Music, rooms 9 and 10.



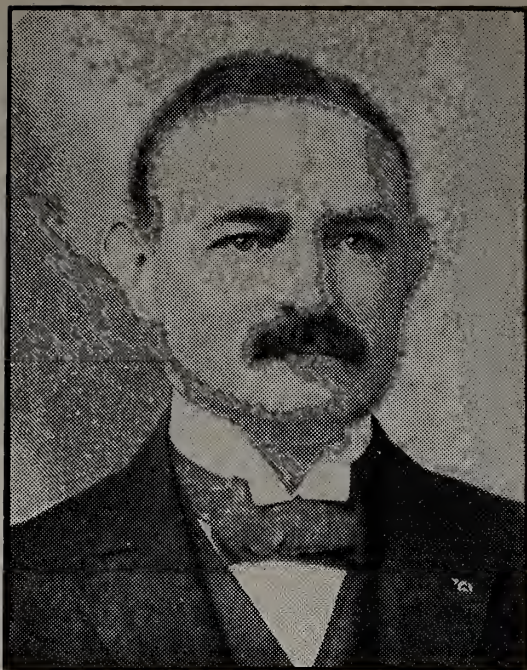
SCOTT, WALTER ROBERT—Born in Jamesville, Rock County, Wis. Educated in Jamesville public schools, University of Wisconsin Pharmacy Department. Came to Tacoma in 1898; in business as pharmacist, Puyallup, Wash. Republican; delegate to State convention in 1908. Deputy Oil Inspector, State of Wisconsin, in 1896. Held all honors in Washington State Pharmaceutical Association Treasurer, Puyallup Valley Association. Member Puyallup Commercial Club, Masons, Red Men, W. O. W., Eagles, etc.



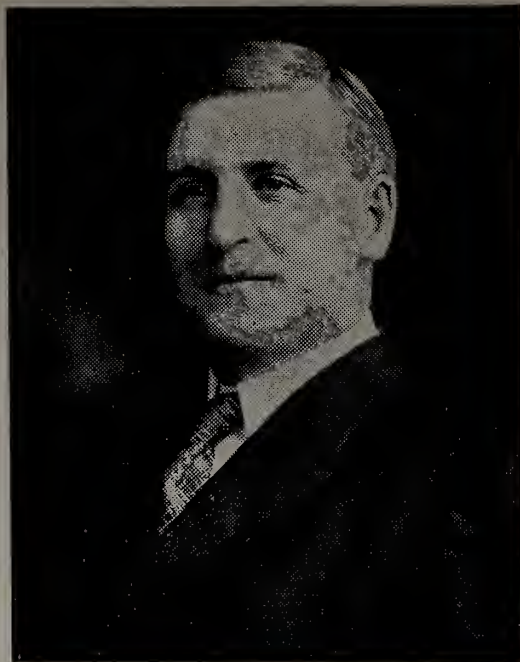
BATES, CHARLES O.—Born Michigan, May 31, 1855. Admitted to bar, Beatrice, Neb., October 31, 1878; practiced law there until May, 1892; during residence in Nebraska served one term as Prosecuting Attorney of Gage County. Connected with the Nebraska National Guard for twelve years, and on leaving Nebraska was chief of staff to brigadier general of First Brigade, with the rank of major. Came to Tacoma in the year 1892 and practiced law in firm of Poolittle & Fogg until 1893. Bates & Murray law firm until elected Prosecuting Attorney for Pierce County in 1903; refused second term, and practiced law alone until the spring of 1908; partnership of Bates, Peet & Peterson; admitted to practice in all courts, including Supreme Court of the U. S. A. Present address, National Realty building, Tacoma, Wash. Belongs to Union Club, Commercial Club; Past Exalted Ruler B. E. O. E., Tacoma, I. F. J. Chapter Mason.



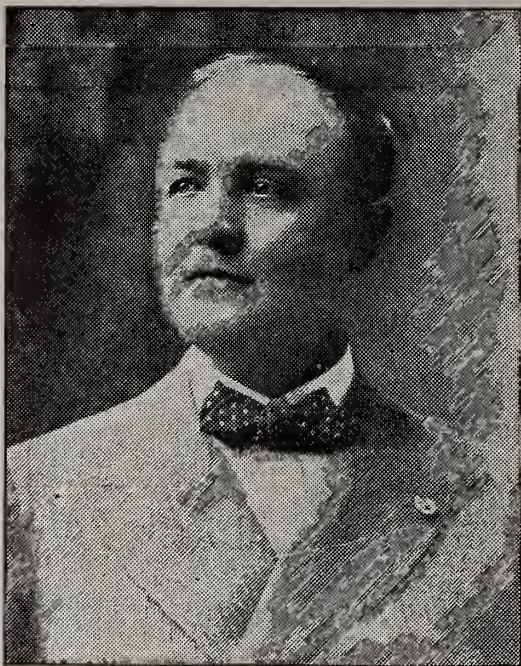
CARD, ERNEST M.—Born at Monroe, Jasper County, Ia. A. B. Stanford University, 1901, Cornell University Law School, L.L.B., 1904. Came to Tacoma in 1889. Justice of peace, Tacoma, 1906-1910; Judge of Superior Court, Pierce County, Wash., 1910-11; Incumbent. His father, Mason L. Card; mother, Mattie A. Card, Long Beach, Cal. Special lecturer in law at University of Puget Sound. Member Masonic orders.



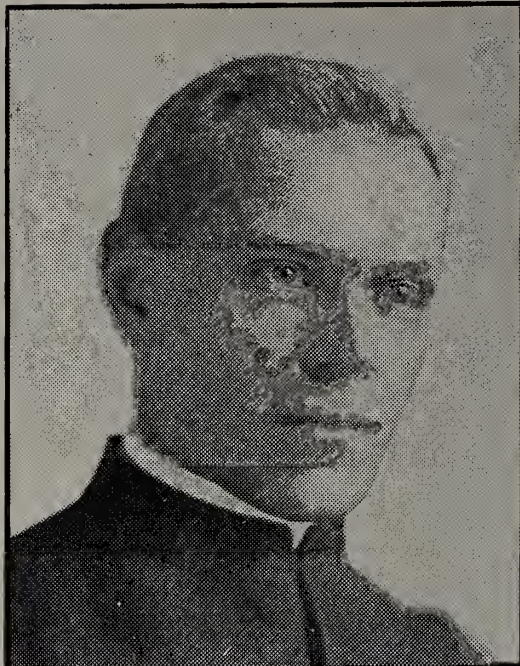
ATKINSON, JOHN D.—Born at Connellsville, Pa., July 14, 1861. Educated in the public schools and graduate of the full classical course of Waynesburgh College, Waynesburgh, Pa., with the degree of Bachelor of Arts. Attended Union College of Law of Chicago and was admitted to the Bar of Chicago. Came to Seattle in 1889, and practiced law there for some years. Elected State Auditor of Washington in year 1900 for a term of four years, after which was Attorney General of the State for four years, making a good record in both offices. Practicing law in Seattle, and is President of the Onyx Marble Company, which is said to have valuable properties. Member of Elks, 32nd Degree Mason and a Shriner.



GROFF, GUY BALDWIN—Born at Owings Mills, Baltimore County, Maryland, October 10, 1876. Educated in private and public schools of Baltimore city, Baltimore City College, completing law course at University of Maryland. Mr. Groff was active in the republican party of Maryland. Enlisted in Spanish-American war as a volunteer in Company A of the First Maryland Regiment; after discharge came to Spokane in January, 1905, and has practiced law since that time. Office, 402-3-4 Mohawk block. Is commander of Gen. Charles King Camp No. 4, of the U. S. W. Veterans of Spokane, Wash., taking active interest both in this department and nationally. Nominated and elected to legislature by majority of 300. During last Legislature was a member of the Judiciary, Insurance and other committees. Member of Spokane Country Club and Spokane A. A. Club.



SULLIVAN, HON. TIMOTHY D.—State Senator and former Representative in Congress. He is a business associate of John W. Considine. He has done much for the poorer classes of New York City, his home. He is a prominent state leader and a member of Tammany Hall, probably the best known political organization in the United States.



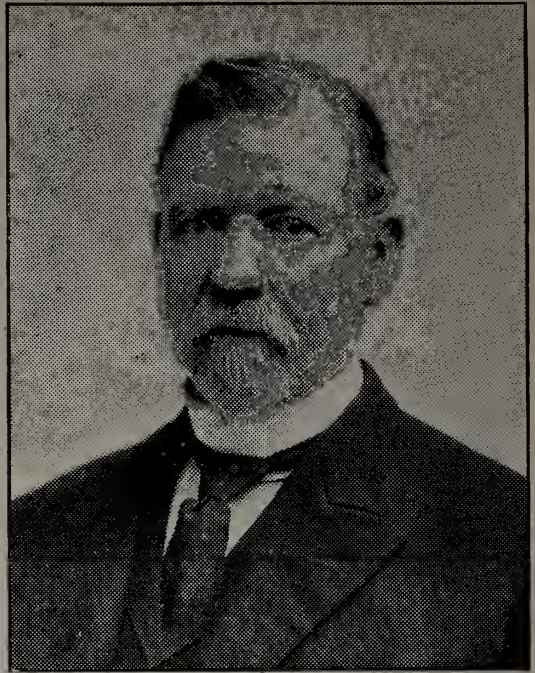
BANNICK, CLAUDE GEORGE—Born August 28, 1876, at Durant, Cedar County, Ia.; son of Mathias and Christene Bannick. Attended public and high schools and institute at Sac City, Ia. Chief of Police, Seattle, Wash. Member Camp George H. Forsten No. 2, Spanish-American War Veterans; member Seattle Athletic Club.



HEMRICH, LOUIS—Born in Alma, Buffalo County, Wis.; educated in public schools of Alma and University of Washington. Brewer; business address, Seattle. Belongs to Arctic Club, Elks and Seattle Athletic Club. President Seattle Brewing & Malting Company.



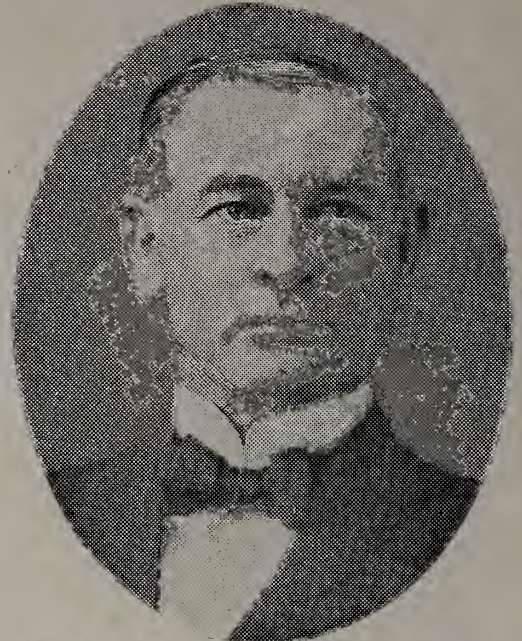
PIERCE, RALPH S.—Born in Laramie, Wyo., March 21, 1879; son of David J. and Etta A. Pierce. Graduate University of California, 1901; Law School, University of Washington, City Attorney since September, 1909. 502 Mutual Life building, Seattle, Wash. Member Seattle Athletic Club, Press Club.



ARTHUR, JOHN—Born June 20, 1849, in County Clare, Ireland. Educated in private schools in Ireland, England and United States; graduated in law department of the Columbian University in 1881. Admitted to the bar Washington, D. C. Law assistant in the office of the Secretary of Treasury 1879-1882. Attorney for Tacoma Land Company April 17, 1883. Member firm Arthur & Hutchinson. Member Alaska Geographical Society; the Authors' Club, London, Eng.; Grand Master Masons 1902-3; Potentate Afifi Temple 1901-2. Republican. Residence, 1515 East Madison street; office, 356 New York block, Seattle, Wash.



CHANDLER, JOHN HIRAM—Born at Lebanon, Va., January 20, 1869. Educated in Academy of Massena Springs, N. Y. Moved with parents to Montana, June 1, 1884; came to Tacoma June 1, 1888. Machinist apprentice in Northern Pacific car shops; ticket agent for Northern Pacific Railway and Puget Sound & Alaska Steamship Company at Northern Pacific dock depot; in general ticket office at headquarters building Northern Pacific Railway; locomotive fireman Northern Pacific Railway eight years; promoted to locomotive engineer, serving about six years. Master mechanic of Northwestern Improvement Company at Red Lodge, Mont., 1903 to December 1, 1906. Entered office of County Auditor; later appointed second deputy auditor; appointed first Deputy County Auditor in 1908; now serving.



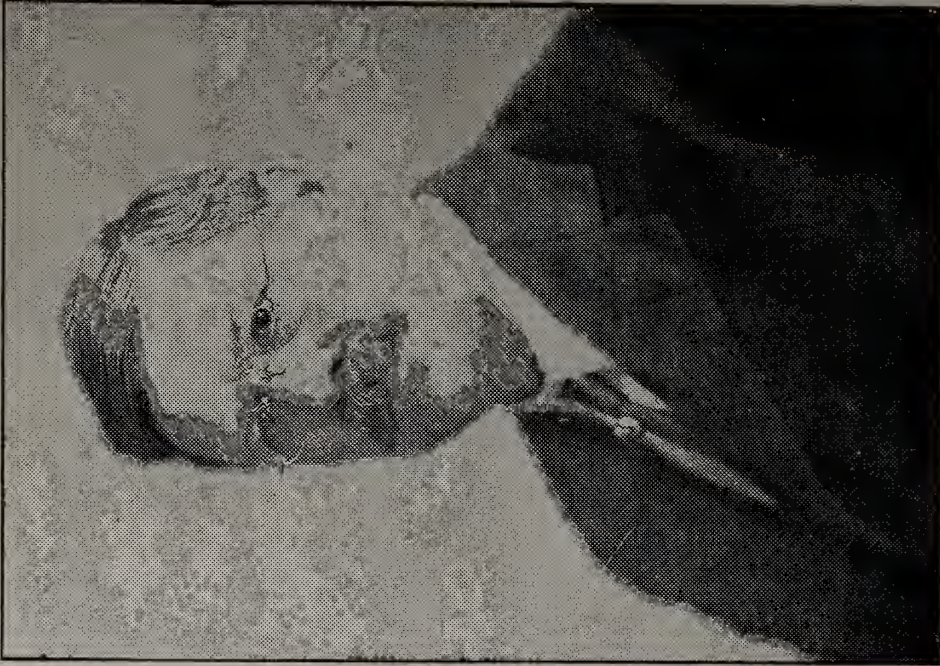
BEACH, WILLIAM MORTON—Born in Kansas, December 8, 1861. Educated in common schools of Kansas, University of Washington and College of Physicians and Surgeons, Chicago, Ill. Came to the Willamette Valley in spring of 1878, and to Seattle in September of the same year. Was graduated in medicine in February, 1886; practiced in Black Diamond, King County, and Olympia, and located at Shelton in the fall of 1889; mayor of same three times; on City Council twelve years; representative for Mason County 1907, 1909 and 1911. Republican in politics. President of Washington State Pharmaceutical Association 1909 and vice-president Washington State Medical Association same year.



ZIMMERMAN, DANIEL J. K.—Born City of New York, N. Y. Attended New York public school. Came to Tacoma in 1904; admitted to the bar in 1906; practiced law in City of Tacoma until 1910; now engaged in fruit growing at Kennewick, Wash.; office in Fidelity building, Tacoma, Wash. Member Commercial Club, Elks, Mason and Shriner.



GREGORY, MORTON—Born in Pottawattamie County, Iowa, in 1875. A. B. Columbia Normal school, Missouri; two years Missouri State University; P. H. B. Drake University; Master of Arts, Drake University; M. D. L., Canton University. President First National Life 1907, first vice-president and General manager First National Life Company, president Tacoma Investment Land & Improvement Company, president Tacoma Investment Company. Member Tacoma Commercial Club, 32nd degree Mason. Office, Tacoma building, Tacoma, Wash.



MESSINGER, ELIAS FLOYD—Born in Denver, Bremer County, Ia., January 22, 1856. Common school education. Came to Portland in January, 1875. In 1878 entered the paint business at Amity, Ore. Arrived Tacoma July 1, 1887; accepted position as clerk with Hunt & Mottet Company; 1896 elected vice-president same company; 1906 succeeded E. P. Mottet as president. Director Y. M. C. A.; member K. of P., Commercial Club and Chamber of Commerce.



BRYAN, JAMES W.—Born in Louisiana, March 11, 1874. Graduated with B. A. degree at Baylor University in 1895; in 1897 received the same degree from Yale University. Admitted to practice law by Supreme Court of Louisiana in 1898. Came to Washington in 1904; located at Bremerton, where he has since resided. Elected City Attorney of the City of Bremerton in 1907, in which position he has shown great vigor in the prosecution of law-breakers. In 1908 was elected to State Senate from the Twenty-third State Senatorial District comprising the Counties of Island, Kitsap and Mason. Record in senate was that of an earnest and progressive



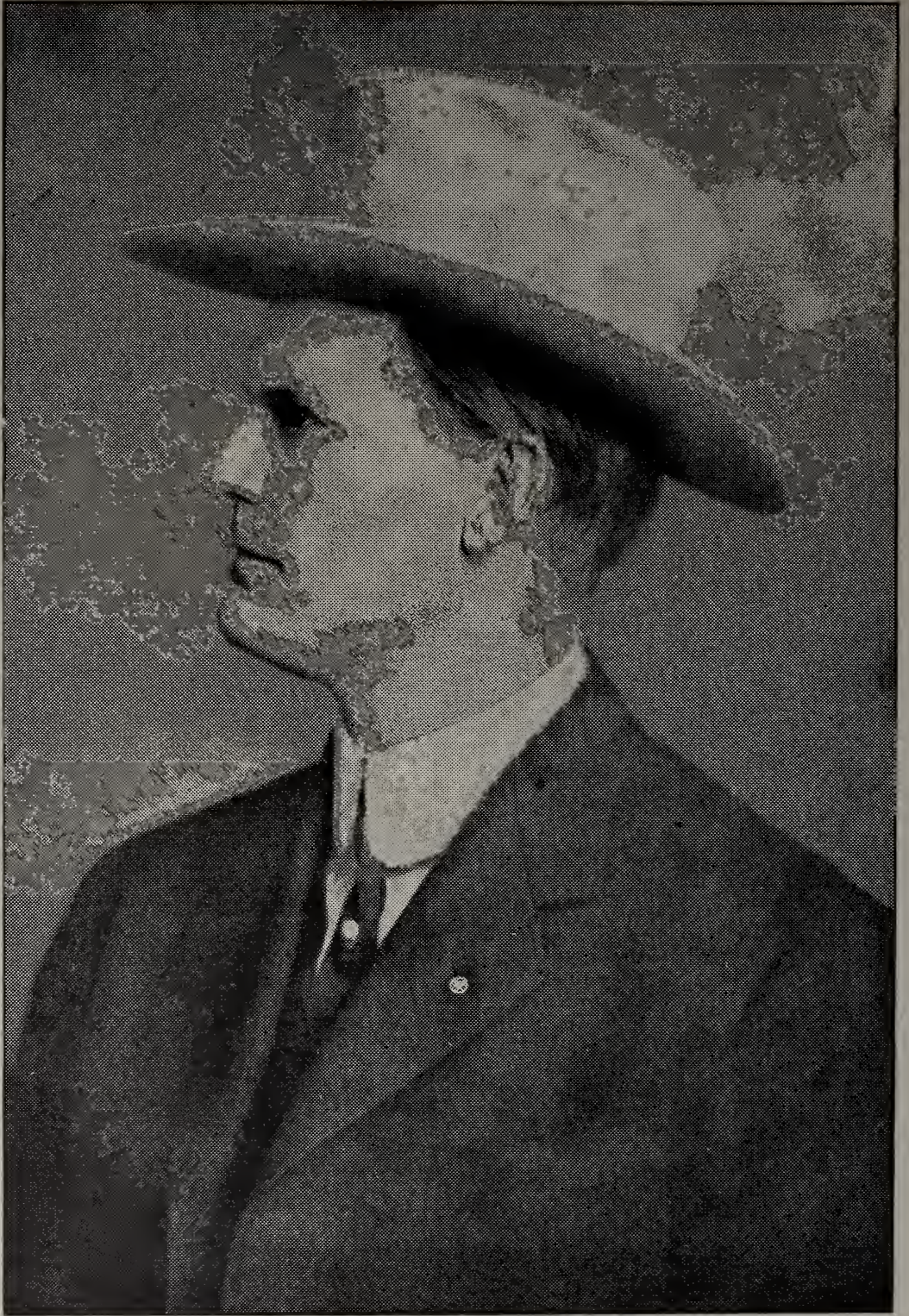
BOUTELLE, FREDERICK ALFRED—Born January 27, 1859 in Brattleboro, Vt. Educated in Troy Academy, Troy, N. Y. Engaged in railway business in New York and Ohio. Came to Tacoma in 1906. Superintendent Puget Sound Electric Railway and Tacoma Railway & Power Company of Tacoma, Wash. Member of Sons of Revolution, Commercial Club.



SIMS, EDGAR A.—Born at Winnipeg, Canada, in 1874. Came west to Port Townsend, Washington, entered salmon cannery, fisherman and logging business. Present address, Port Townsend, Wash.



HUXTABLE, JESSE—Born December 4, 1863, at Tiverton, Devonshire, England. Educated in common schools in England. Came to the United States at age of 17 years; landed in New York; stayed there one year. From there he came to Colorado, staying seven years. From Colorado he came to Sprague, Wash., in July, 1889, and to Spokane, Wash., in 1906. Learned journeyman tailor's trade in England. Took up railway work in the United States, following it continuously. Elected to House of Representatives from Spokane County in 1903; re-elected in 1907, and elected to the Senate in 1909. Present address, Spokane, Wash.



BILLINGS, ORVILLE—Born in Preston, Fillmore County, Minn. Common school education. 1890-92, contracting business Denver, Colo. Came to Tacoma in fall of 1902 with the Equitable Savings & Loan Association of Portland, Ore., as special agent for five years. January, 1907, organized Pacific Building & Loan Association, with headquarters at Tacoma; elected secretary and manager, holding this office at the present time; offices in Andrews block. The association boasts of the largest membership of any association on the Coast; starting with a revenue of \$90 per month, at the present time \$20,000 per month. Member of Rotary Club, Commercial Club and Chamber of Commerce.



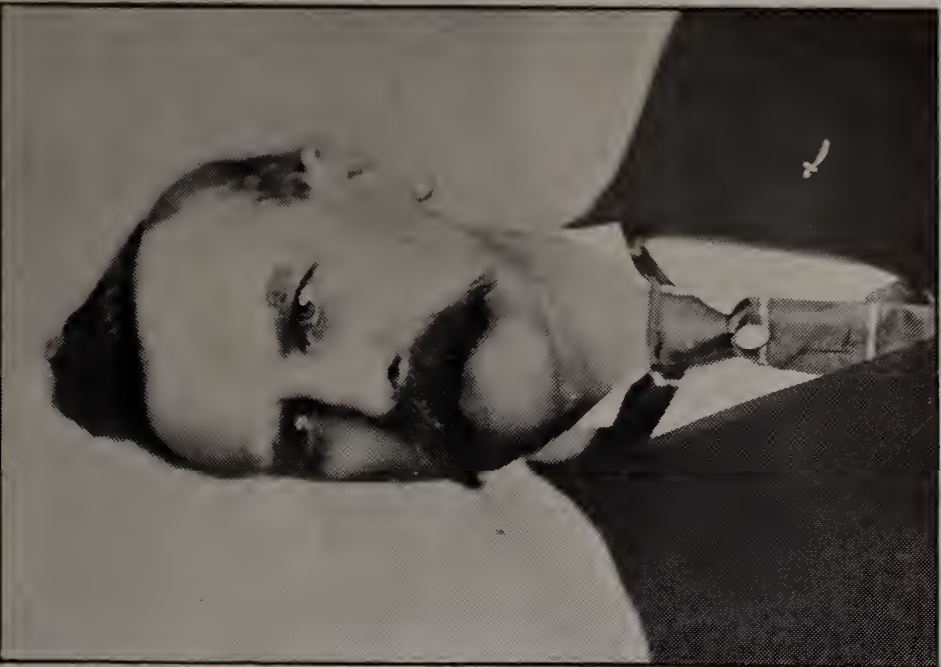
HAYES, JAMES AMENZO—Born in Horicon, Wis., September 18, 1870. General insurance from 1890 to 1900 in Boise, Idaho. General agent New York Life Insurance Company 1900 to present day; office, 205 Bank of California building. Member Patriotic Society of S. A. K., and Order of Colonial Wars.



HODGE, ROBERT T.—Born in Dunbarton, Scotland, on the 17th of March, 1875. Went to sea as an apprentice in 1887. Landed in Tacoma, Wash., in 1890. Worked on farms around Enumclaw in King County for one year and then went teaming over the Cascade mountains during the construction of the Great Northern Railway, followed mining for ten years. Was appointed Deputy Sheriff of King County, Wash., on the 28th of February, 1903, which position he held until July 1, 1908. Was elected Sheriff of King County, Wash., in November, 1908; then re-elected November, 1910, leading the Republican ticket on both occasions. Is a candidate for Governor in the election of 1912.



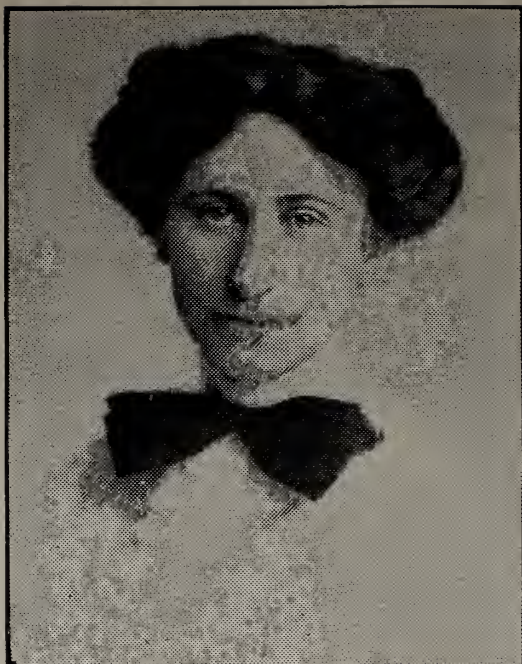
AUSTIN, JOHN FRANKLIN—Born in Troy, N. Y. Educated in dental department Northwestern University. Practiced dentistry in Grand Rapids, Mich., for six years, coming to Tacoma in 1906, located dental offices in Equitable building for two years; practiced profession in this location, after which procured one-half interest in Electro Dental Parlors, one of the largest dental offices in the United States. Also heavily interested in Eastern Washington lands and mining properties in British Columbia. Now has offices in Tacoma The ater building, Tacoma, Wash.



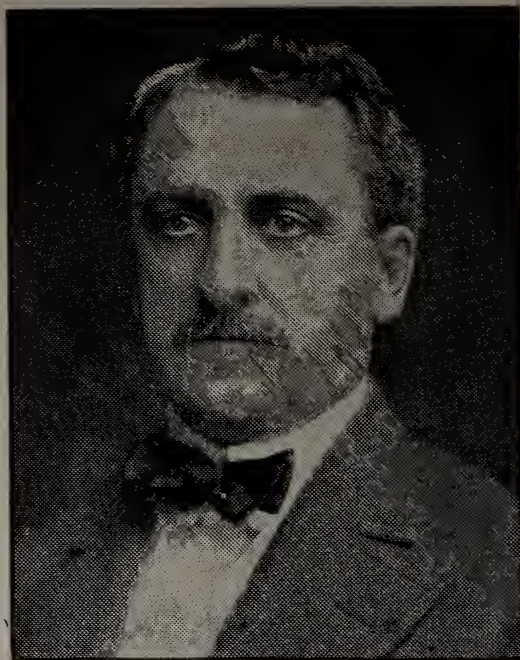
HAWTHORNE, JOSEPH B.—Born Bolton, Lancashire County, England. Came to Tacoma March 17, 1884; entered business as general and railroad contractor. Served three terms in City Council; nine years trustee University of Puget Sound. Business address, Bank of Commerce building, Tacoma, Wash. Member of all Masonic bodies and Commercial Club.



BRADEN, A. E.—Physician. Medical examiner. First National Life Insurance Company, offices, Provident building. Home address, 1905 North Prospect street.



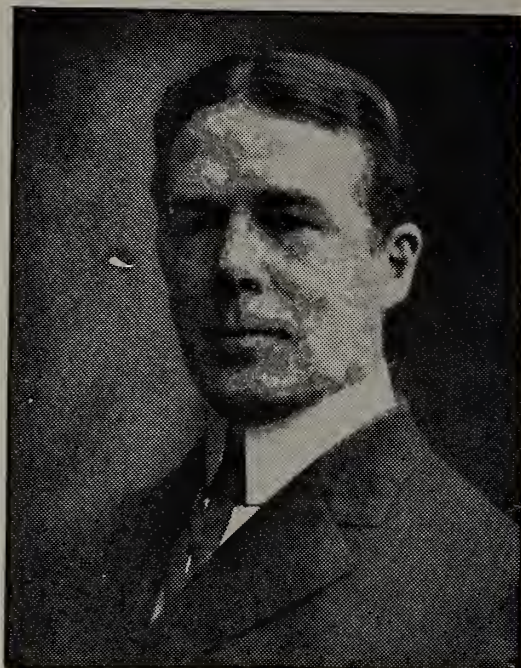
JAEGER, NELDA—Born in Tacoma, Pierce County, Wash. Educated in Tacoma Grammar and High Schools, State University of Washington, Liberal Arts and Law School; took degree of Bachelor Laws, University of Washington, in 1910. Only woman attorney in Tacoma practicing law independently and alone. Vice-president Tacoma Business Women's Club 1911; member executive board of Voters' Educational Association 1910-11. Business address, 819-20 Fidelity building.



ROBERTS, JOHN W.—Born in Elizabethtown, West Virginia, December 29, 1859. Graduated from University of Kansas in 1888. Lawyer. Practiced law at Hutchinson until 1900. Seattle, Wash., since 1900. Was general counsel A. Y. P. Exposition. In addition to local corporations, represents National Surety Company, Maryland Casualty Company, Royal Indemnity Company, et al. Member Rainier Club, Seattle Country and Golf Club, and Arctic Club, and Sigma Chi Fraternity.



MESS, FREDERICK JULIUS—Born at Seattle, Wash., February 13, 1872. Educated at University of Washington and dental department of Northwestern University, Chicago, Ill. Farmer and dairyman at Orilla, Wash. Breeder of Holstein cattle. Member of Legislature of 1911. Member of Washington State Dairy Protective Association and Grange.



KANE, THOMAS FRANKLIN—Born Westfield, Ind., May 5, 1863; son of John (M. D.) and Minerva J. Kane. Graduate De Pauw University 1888; Ph. D. Johns Hopkins University, (in Latin, Greek and Sanskrit), 1895; LL. D. De Pauw University 1911; record-professor Latin and Greek, and vice-president 1888-90; acting president 1890-1, Lewis College; scholar in Latin 1893-4, fellow in Latin 1894-5, Johns Hopkins; professor Latin 1895-1900, principal preparatory department 1897-1900, Olivet College; professor Latin 1900-1902, acting president 1902-3, president since 1903, University of Washington. Address, Seattle, Wash. Member Phi Beta Kappa, College Club, University Club, Commercial Club.



KELLY, ELLIOTT—Born at Paris, Bourbon County, Kentucky, October 6, 1870. After leaving school worked in Du Pont coal mines for several years, then joined staff of the Cincinnati Commercial Gazette under Perry S. Heath. Following this from 1893 to 1899, was Managing Editor and editor Louisville Commercial and Louisville Evening News. On editorial staff of Philadelphia North American from 1899 to 1903. Came West with Perry S. Heath in 1903 and organized Salt Lake Telegram Publishing Company, of which was president and general manager until 1908, when he came to Tacoma to become general manager of the string of daily newspapers Owned by S. A. Perkins. Member Tacoma Country and Golf Club, Union Club, Rotary Club, and trustee Tacoma Commercial Club and Chamber of Commerce and trustee Washington State Game Association.



STAYTON, L. V.—Born Lockhart, Caldwell County, Texas, February 18, 1858; son of Judge Thomas and Nancy Stayton. Came to Tacoma February 16, 1888; engaged in brick manufacturing and building. Later engaged in teaming and general contracting. President and general manager Pacific Coal & Oil Company, Motor Pacific Coast Coal Company, president Current & Milling Company, vice-president Orient & Occident Lumber manufacturer of Lone Star Cement Sewer Pipe, Shingle Company; contractor. Member Chinook Tribe of Red Men P. O. S. of A., W. O. W., and National Union. Office, 510 California building.

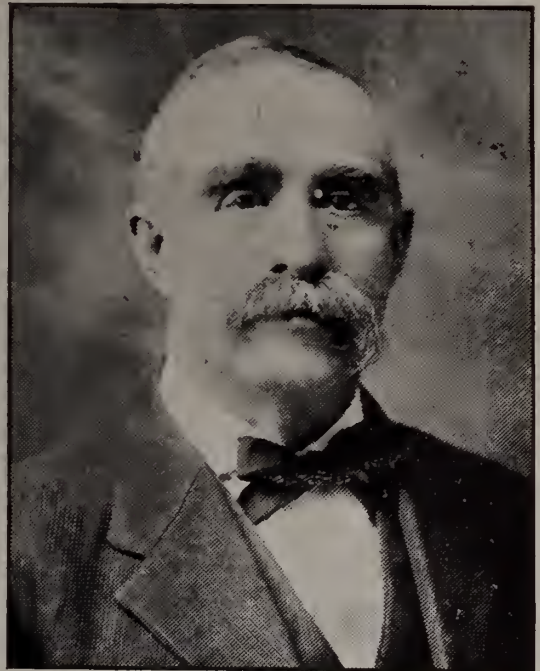


SHEEFER, GEORGE M.—Born in Lafayette, Indiana. Came to San Francisco in 1876. Educated in public schools. Came to Tacoma in 1880 as Children Manager of the Globe. Worked on Tacoma Ledger 1892-1893. In 1904 went into baseball business with two others. In 1906 formed new league which included Tacoma, Aberdeen, Battle, Spokane, and by so doing kept the Northwest League together. Bought and built new ball park in 1907. Operated Tacoma ball team until 1912 when he retired, donating the franchise to the business men of Tacoma. Merchant and real estate business at 902-4-6-8-10, and 12 Commerce street, Tacoma, Wash. Life member Elks, Moose and Eagles. Member Commercial Club and Chamber of Commerce.

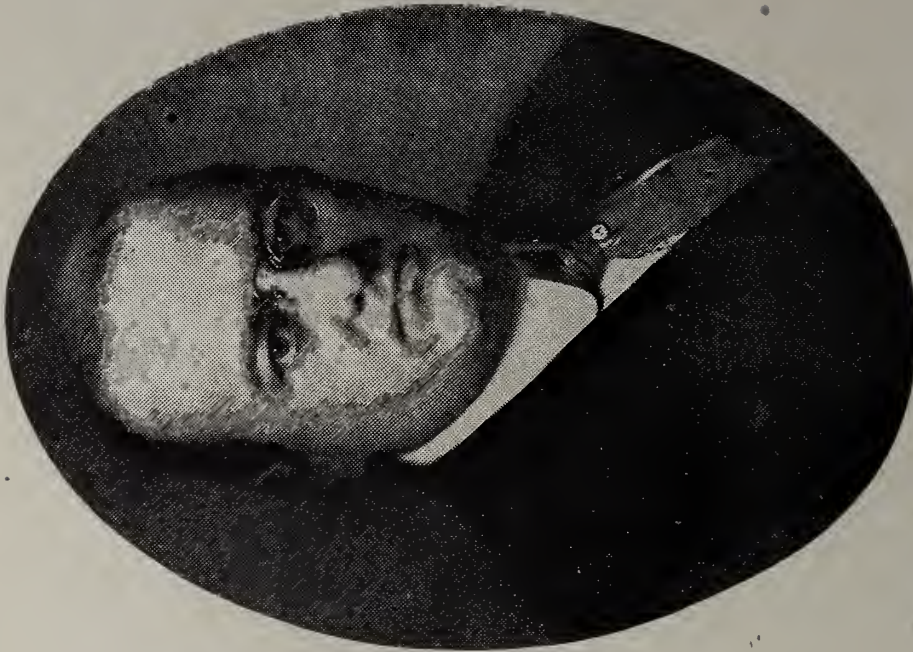


LEFEBVRE, LOUIS I.—Born at Fond du Lac, Wisconsin. Graduate of high school, Milwaukee, Marquette College, University of Wisconsin. Law Department. Came to Tacoma in June, 1909. Lawyer, Lefebvre, Loomis & Foss. Business address, National Realty Building, Tacoma, Wash. Member Commercial Club, University Club, Elks, Knights of Columbus.

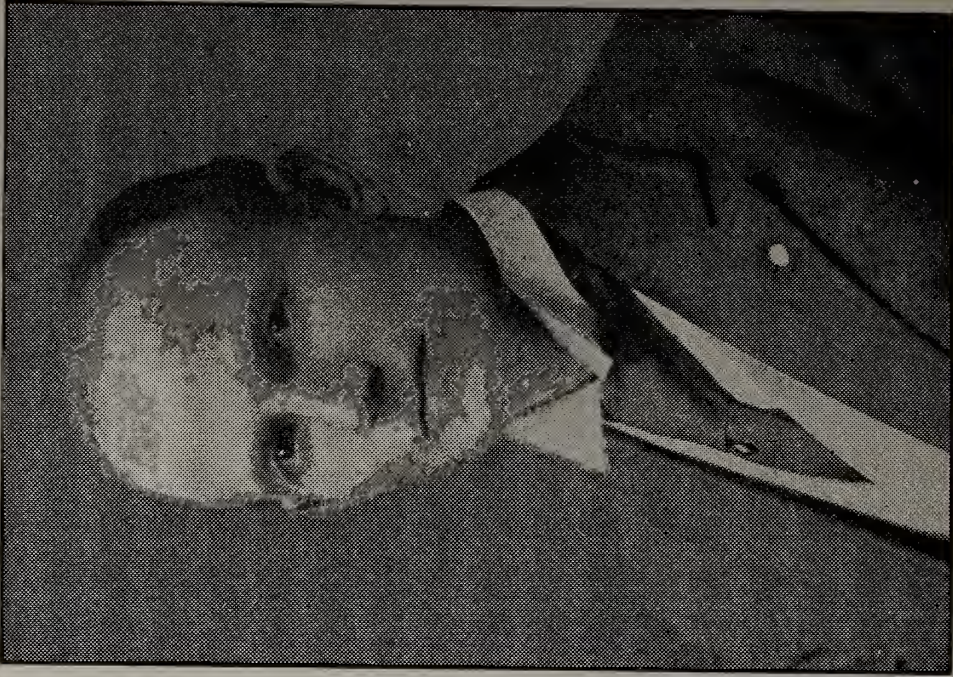
LEONARD, P. C.—President the Leonard Lumber Company. Bailey building, Seattle, Wash.



FONTAINE, J. A.—State Representative from Columbia County. Residence, Dayton, Wash.



DOVER, ELMER—Born at McConnelsville, Ohio, April 14, 1873. Educated in public school. Newspaper work from the age of 16 to 21 in McConnelsville; 1897 private secretary to Mari Hanna. Secretary of Republican National Committee and member of the National Executive Committee seven years, resigning to enter Byllesby & Co. two years ago. Came to Tacoma in December, 1911, as President of the Tacoma Gas Company and Olympia Gas Company. Member Union, Commercial and Country Clubs, Tacoma; Arlington Club, Portland; Lawyers Club, Railway Club, Ohio Club and Republican Club, of New York; original member National Press Club, Washington, D. C.; Tippecanoe Club, Cleveland, Ohio, and Hamilton Club, Chicago.



HATHAWAY, ALFRED RICHARD—Born in Douglas County, Ore., January 11, 1870. Educated in grammar schools of California; A. B. Hesperian College, Woodland, Cal.; later degrees, University of California and Stanford University. Represented Mutual Life of New York for five years in Oregon. Superintendent of agencies for First National Life of Tacoma. In 1909 organized Northwestern Land & Improvement Company, now vice-president and general manager, with offices in Savage-Scotfield building, Tacoma, Wash. Member of Commercial Club and Chamber of Commerce, Blue Lodge Mason.



BARNES, JAMES E.—Born at Bowling Green, Kentucky. Educated in common schools and McKendree College, Lebanon, Illinois. In real estate business in St. Louis to 1906, then came to Seattle, Wash. Took up residence in Centralia in 1907, engaging in timber and real estate business. Became secretary of the Southwestern Washington Development Association and manager of the Southwestern Washington Settlers' Agency, in which capacities Mr. Barnes has made a wonderful advancement for Southwestern Washington. Served in the fifth Cavalry during the Spanish-American War and saw service in Porto Rico. Member of the Hoo Hoos, Modern Workmen of the World and Elks.



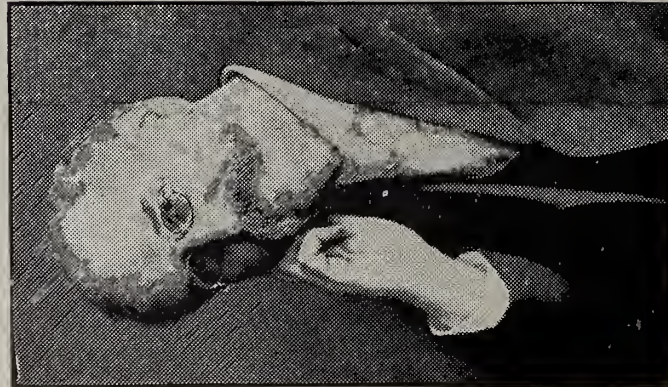
SULLIVAN, P. C.—Born on the frontier of Nebraska in 1859. Shortly after family emigrated to Oregon and settled in the Willamette Valley. Educated in common schools. Learned printer's trade in old-fashioned printing office at The Dalles, Oregon. Commenced reading law when about 17 and was admitted to practice in 1882. Left Oregon and settled at Colfax, Washington Territory, in 1883. Practiced law there for about five years, then located in Tacoma. Was a member of the constitutional convention. Republican nominee for Governor in 1896 and defeated. Still practicing law in Tacoma, Washington.



FEIST, THEO.—Arrived in Tacoma 1889; established in business 1895. President of Feist & Bachrach, Inc. Member of Commercial Club and Chamber of Commerce, Scottish Rite Mason and State Lodge, No. 68, and Order of Mystic Shrine.



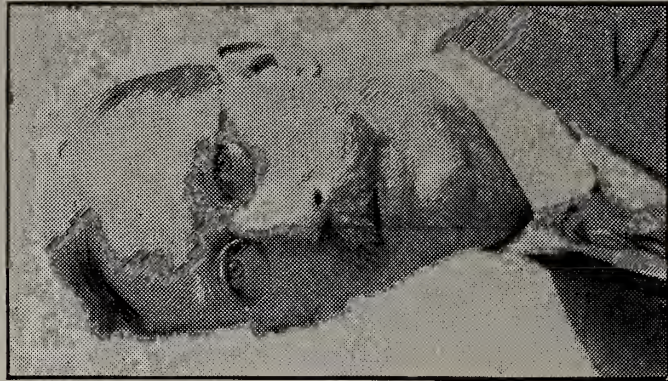
MCCORMACK, JAMES—Born March 29, 1862, at Longford, Longford County, Ireland. Educated at Erasmus Smith School and Wesley College. Came to Tacoma and entered into department store business; now located at 1348 Pacific avenue. Member of Commercial Club and Country and Golf Club of Tacoma.



JACKSON, ALBERT L.—Born in Knoxville, Iowa, in 1856, son of J. W. and Mary M. Jackson. Crossed plains with parents in 1862. Entered the first class of Oregon State University. Taught there. Learned photography in 1877. Came to Tacoma in 1885. Organized and first President of Pacific Northwest Photographers' Association. Has won many medals and honors, both in Pacific Coast Associations and National Associations. Member of Chamber of Commerce and Commercial Club, director in Moose Lodge, President of the official board of the Central Christian Church of Tacoma.



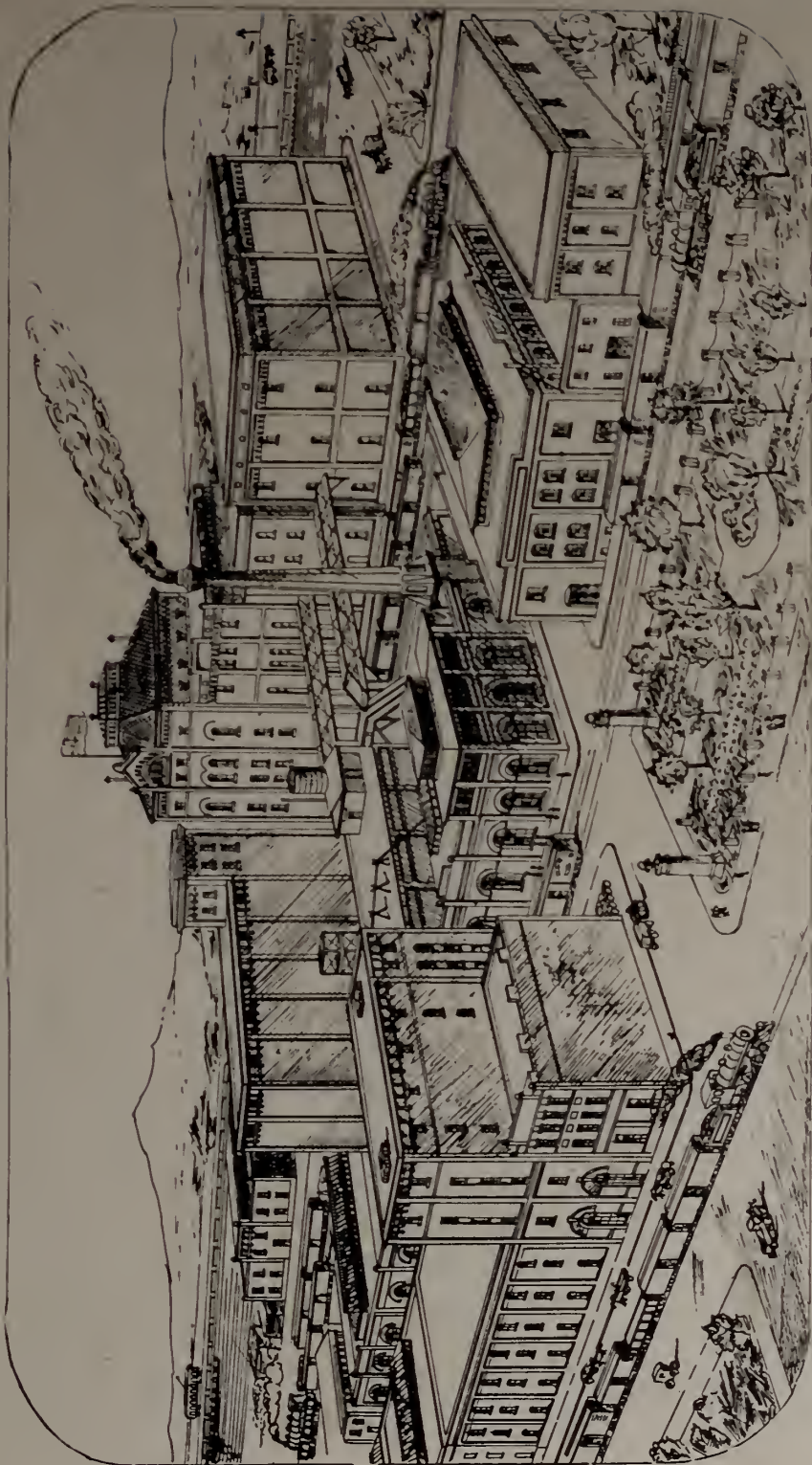
HITT, J. M.—Born October 16, 1854, in Indiana. Educated in Vermont Seminary, Montpelier, Vt., and graduated at Wesleyan University in class of '76. Master of Arts, Principal of the High School at Delphi, Ind., 1876-79; professor of science 1880-81. Came to Washington in 1890 as Superintendent of Schools of Sehome County. Superintendent of Schools of Whatcom County six years. Appointed State Librarian, his present position, in 1905.



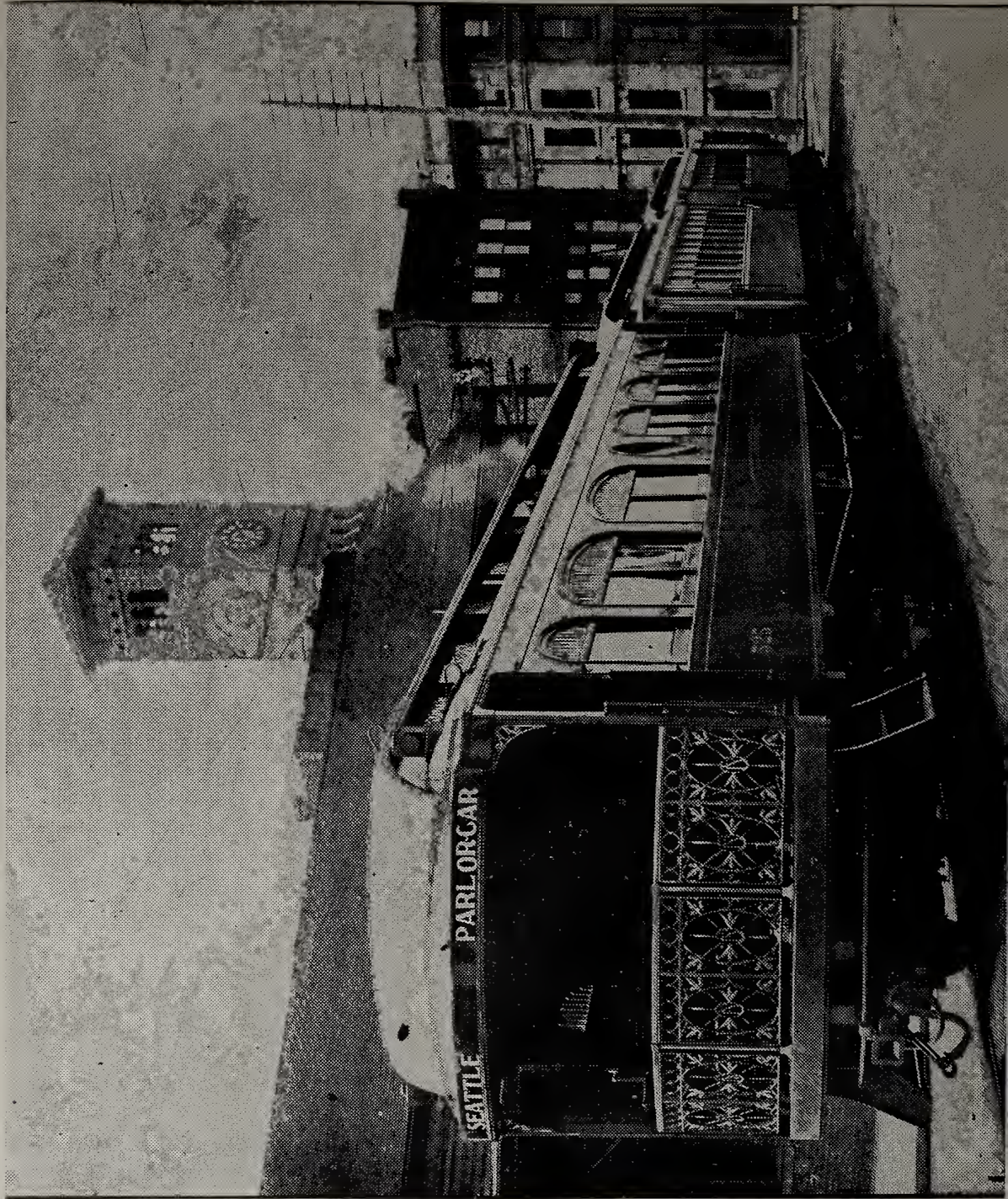
MORRISON, J. B.—Born in Wheeling, W. Va., December 15, 1860. Educated at Pennsylvania Military Academy and Ohio Wesleyan University. Appointed Deputy Land and Deputy Mineral Surveyor, Denver, Colo., 1883. Assistant in City Engineer's office, Denver, Colo., 1883-4. City Engineer, Delaware, O., 1884-6. Deputy County Engineer of King County, Wash., 1901 to 1908. Elected County Engineer 1908; re-elected 1910.



BARMIESEL, ARTHUR HENRY—Born in San Jose, Cal., November 16, 1869. Educated Stanford University 1893, one year Cornell University. Came to Tacoma in November, 1902; established A. H. Barmhiesel investment business in 1907. Present address, 421-22 California building. Member of Commercial and Country Clubs.



Plant of Pacific Brewing & Malting Co., Tacoma, Wash.





Parlor Car Interior, Tacoma-Seattle Interurban.



BOSTON PUBLIC LIBRARY



3 9999 04657 722 5

